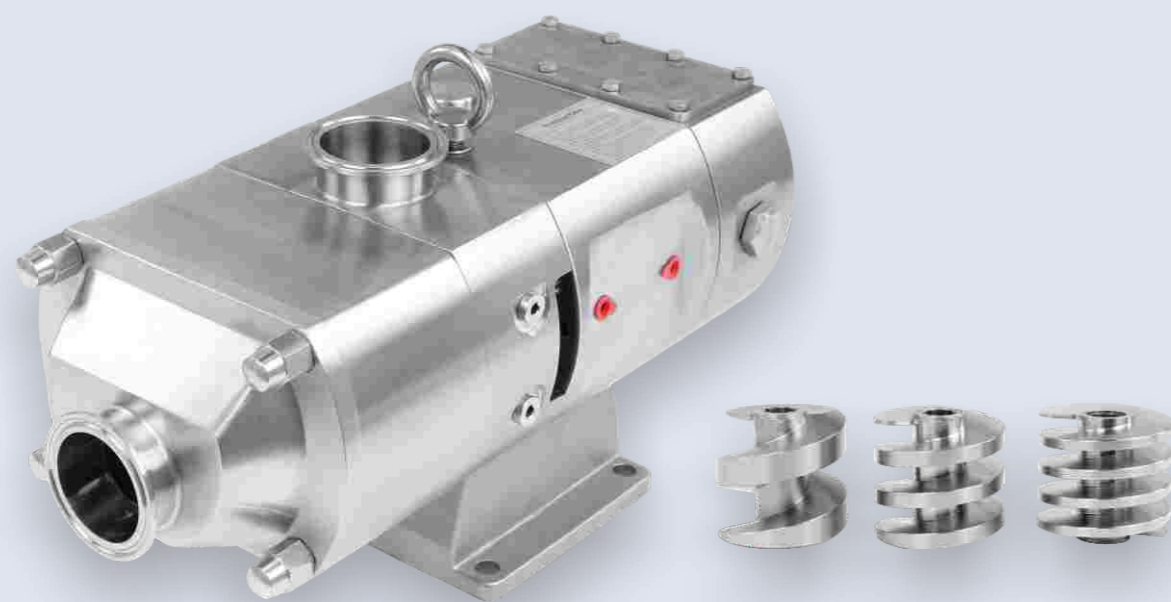


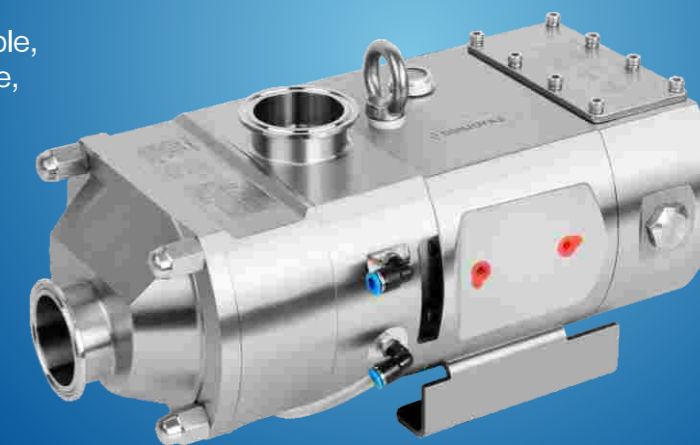
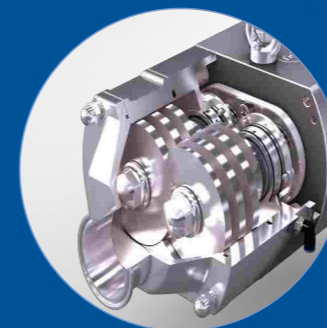
# Screw pumps

2022 / 螺杆泵 / 系列



## LG SERIES TWIN SCREW PUMP LG 系列双螺杆泵

双向可逆、高压、高低粘稠、  
大颗粒、无脉冲、液体输送的柔性解决方案  
Flexible solution for two-direction reversible,  
high pressure, high viscosity, large particle,  
pulse free, liquid delivery

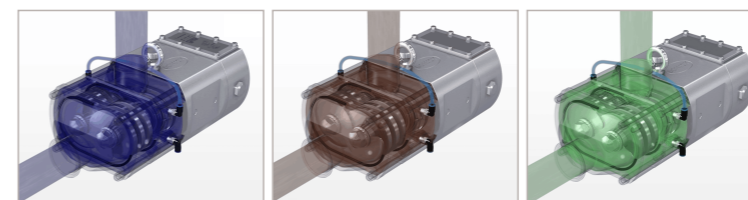


双螺杆泵具有较强的自吸能力，可输送含有固体颗粒、气液混合物、高粘稠、低粘稠等物料；它不但用于物料抽取和输送，也可应用在CIP和SIP系统上，可减少管路、阀门、CIP专用泵，不仅提高效率、且可以降低成本。该泵还具有其他容积泵所不具备的性能，如，无脉冲、颗粒无破损、高压、转速范围广、流量范围大等特点。

Twin-screw pump has strong self-priming ability, can transport solid particles, gas-liquid mixture, high viscosity, low viscosity and other materials. The pump not only can extract and convey materials, but also apply for CIP and SIP systems, can reduce pipeline, valve and CIP exclusive pumps, which improve efficiency and save cost. It has extra characteristics, that other volume pumps do not have, such as no pulse phenomenon, no particle damage, high pressure, wide speed range, large flow range and so on.

### 技术参数 Technical Specifications

最大流量 Max flow	180m <sup>3</sup> /h
最大颗粒 Max particles	39mm
最高压力 Max pressure	20bar
转速范围 Speed range	10-3500 R.P.M
工作温度 Working temperature	-40°C to 150°C
表面处理 Surface treatment	Ra≤0.6 μm; EP=Ra0.4 μm
材质 Material	100%不锈钢, 介质接触部分316L 100% stainless steel, Medium contact part 316L
认证 Certification	3-A-02-12 No.1759; FDA 177.2600; CE-MD/06-42 No.705201402401-00

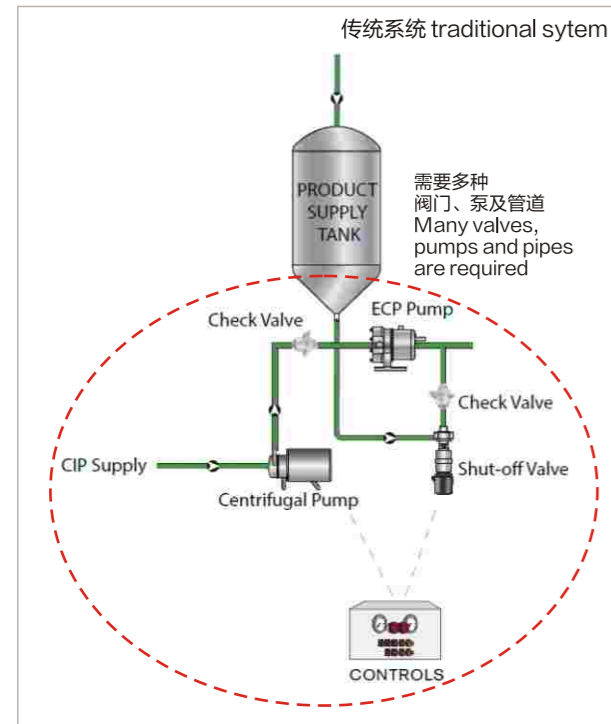


国家高新技术企业 浙江省著名商标

**After used screw pump other auxiliary pumps and valves and controllers can be reduced as more as possible**  
**最大限度减少过程中的泵/阀门和控制**

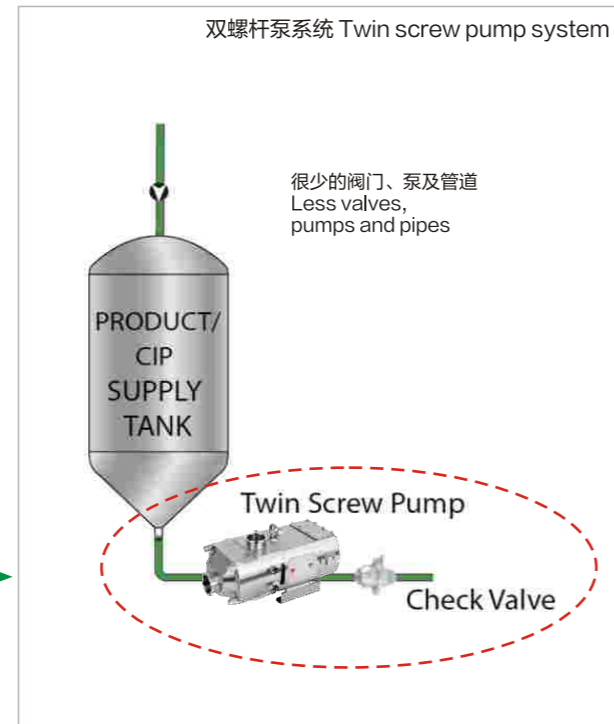
**其他方案CIP清洗和介质输送的配置**

**Other solutions CIP cleaning and media delivery configuration**



**螺杆泵方案CIP清洗和介质输送的配置**

**Screw pump solutions CIP cleaning and media delivery configuration**

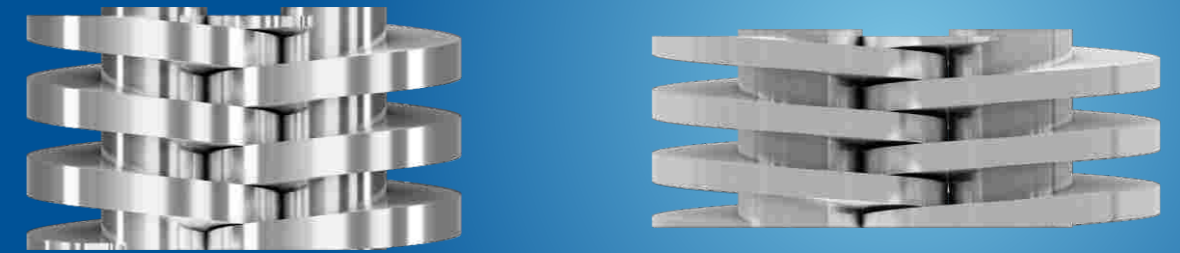


凭借其较强的自吸能力，LG系列螺杆泵既具有输送高粘度和低粘度能力，又具有抽取CIP液和清洗功能。选择LG系列螺杆泵可以让您减少CIP专用泵和阀门控制系统以节省设备成本投入。

With its strong self-priming capacity, the LG series screw pumps have the ability to deliver high viscosity and low viscosity medium, as well as CIP liquid extraction and cleaning functions. Choosing LG series screw pump will help you to reduce using CIP dedicated pump and valve control system, it will save cost.



**CHOOSE THE RIGHT**  
**SCREW SPACING FOR YOUR PROCESS**  
**螺杆间距选择**



选项1: 大间距螺杆, 更大的流量, 可输送更大颗粒物, 但相比较小间距螺杆压力会更低;

选项2: 小间距螺杆, 流量更小, 但压力更高, 可输送通过颗粒也同样会变小。

Option 1: Large screw spacing, larger flow rate, can deliver larger particles, but the pressure will be lower compared with small spacing screw.

Option 2: Small screw spacing, lower flow rate but higher pressure, the particles that can be transported will also be smaller.

小间距螺杆 Small spacing screw	中等间距螺杆 Middle spacing screw	大间距螺杆 Large spacing screw
更高压力, 更小流量, 更小颗粒 Higher pressure, lower flow rate, smaller particles	中等压力, 中等流量, 中等颗粒 Middle pressure, Middle flow, Middle particles	较低压力, 更大流量, 更大颗粒 Lower pressure, larger flow rate, larger particles



# TECHNICAL

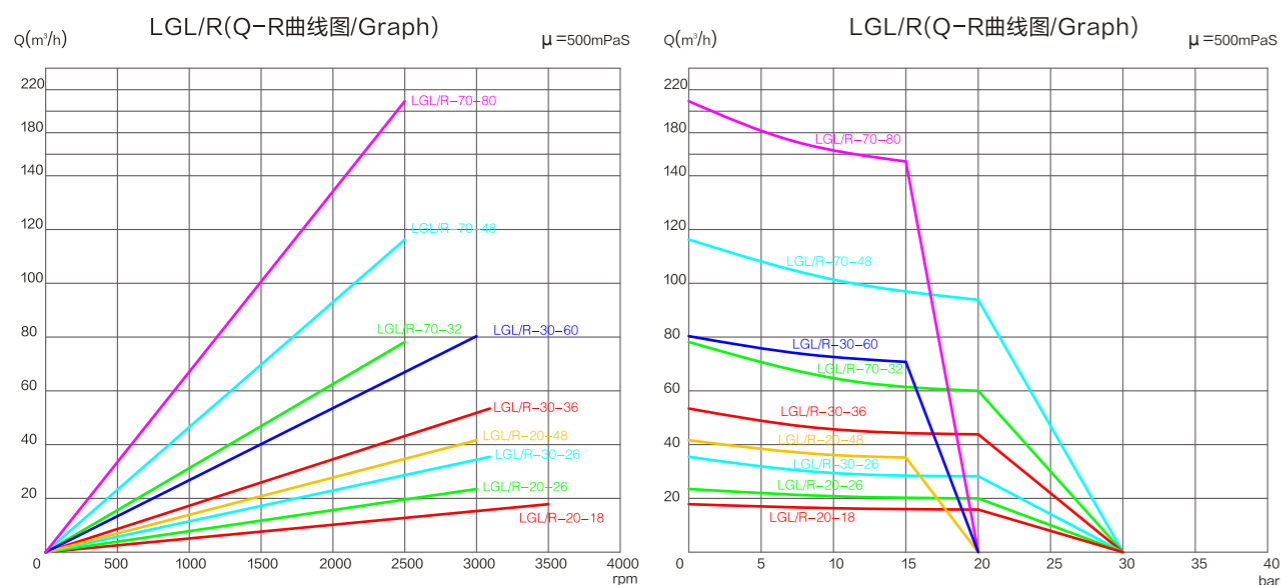
## CHARACTERISTICS SELECTION TABLE

### 技术特性选型表



型号 Model	螺杆间距 Screw pitch (mm)	每转排量(L/r) Discharge per revolution	最大流量 Max flow (L/m)	最大流量 Max flow (m³/h)	最高转速 (rpm) Max speed (minutes)	可通过粒径 Max diameter of passed granule (mm)	最大压力 Max pressure (bar)	泵头进口 Head port (inlet)	泵体出口 Body port (outlet)	重量 Net weight (kg)
LGR-20-18	18	0.07	252	15	3600	8.5	20	1"-2"	1"-2"	30
LGR-20-26	26	0.10	360	22	3600	12.5	20			
LGR-20-39	39	0.15	435	26	2900	19.0	20			
LGR-30-24	24	0.14	406	24	2900	11.5	20	2.5"-3"	2"-3"	59
LGR-30-40	40	0.25	725	44	2900	19.5	20			
LGR-30-60	60	0.37	1073	64	2900	29.5	20			
LGR-70-32	32	0.47	1363	82	2900	15.5	20	3"-4"	3"-4"	155
LGR-70-54	54	0.79	2291	137	2900	26.5	20			
LGR-70-80	80	1.17	3393	204	2900	39.5	20			

### LG螺杆泵曲线图 LG screw pump graph



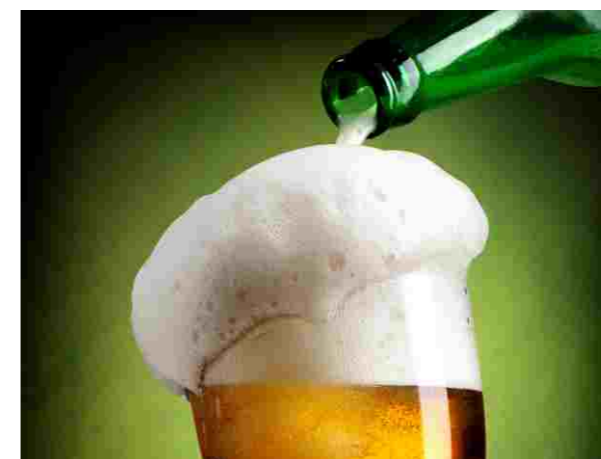
# TYPICAL PRODUCT APPLICATION

## 典型的产品应用

### 食品与饮品 Food and Beverage

汤、炖肉、番茄酱、蔬菜、调味品、巧克力、脂肪和油、奶油馅料、啤酒厂、麦芽汁、软/果汁饮料、肉类加工。

Soup, stew, ketchup, vegetables, condiments, chocolate, fat and oil, cream filling, breweries, wort, brewery, wort, soft drink/fruit juice, meat processing.



### 乳业 Dairy

奶油、牛奶、奶酪凝乳和乳清、干酪、酸奶。

Cream, milk, cheese curd and whey, cottage cheese, yogurt.



### 医药/化妆品 Medicine/Cosmetic

药膏、糖浆、提取物、浆液、面霜和乳液、头发定型凝胶和液体、染料和醇类、肥皂、化妆品。

Ointment, syrup, extractive, serum, face creams & emulsion, hair styling gels & liquids, dyes and alcohols, soap, cosmetics.



### 化工/工业 Chemical/Industrial

溶剂、油漆、燃料、树脂、聚合物和淤泥、石油和润滑油。

Solvents, paints, fuels, resins, polymers & sludges, oil & lubricants.



# VERY RICH

## AND FLEXIBLE COMBINATION

### 非常丰富而灵活的组合

#### LG-R 卧式螺杆泵(推荐配置)

##### LG-R Screw Pump (recommended configuration)



LG-R-卧式螺杆泵标准配置，进出口双向可逆，控制电机反向旋转即可将达到物料反向输送的目的。

LG-R-screw pump's standard configuration is inlet and outlet bi-directional reversible, control the reverse rotation of the motor can achieve the purpose of material reverse conveying.

#### LG-L 立式螺杆泵(选型配置)

##### LG-L-Screw Pump (Selection Configuration)

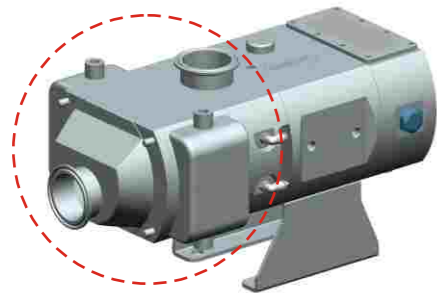


LG-L-立式螺杆泵标准配置，进出口双向可逆，控制电机反向旋转即可达到物料反向输送的目的。

LG-L-screw pump's standard configuration is inlet and outlet bi-directional reversible, control the reverse rotation of the motor can achieve the purpose of material reverse conveying.

#### 螺杆泵+保温夹套

##### Screw Pump + Heating Jacket



配置保温夹套的螺杆泵广泛应用于输送各种易凝固的物料，如输送巧克力，糖果，胶体等在常温下凝固或易变质的物料，根据工艺要求配备前盖保温或者四周保温等机构。

Screw pump with heat jacket is widely used for transporting materials which are frozen or will freeze or perishable at room temperature, such as chocolate, candy, gum, etc.. According to the process requirements, it is equipped with front cover heating jacket or surrounding heating jacket structure.

#### 变频电机斜齿轮螺杆泵

##### Variable frequency motor helical gear screw pump

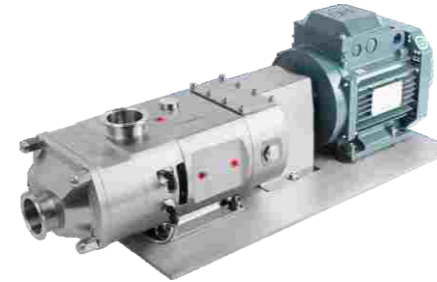


配置了斜齿轮变速箱和变频电机，该配置可根据用户个性化需要，设定、编辑变频器，也可通过PLC编程实现自动控制。

The pump is equipped with helical gear gearbox and frequency variable motor. According to the user's individual needs, can set and edit the inverter, can also be automatically controlled by PLC programming.

#### 电机直连式螺杆泵(推荐配置)

##### Motor Direct-connected Screw Pump (recommended configuration)

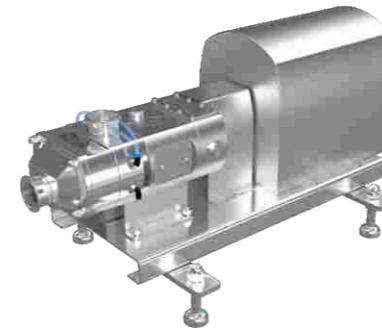


配置了电机直连式，是指电机未通过减速机或其他的中间装配间接连接泵，而是直接连接到螺杆泵，该配置可根据用户个性化需要，设定、编辑变频器，也可通过PLC编程实现自动控制。

Motor direct-connected means that the motor is not connected to the pump through the reducer or other intermediate assembly, but is directly connected to the screw pump. This configuration can set and edit the inverter according to the user's individual needs. PLC programming implements automatic control.

#### 全防护螺杆泵

##### Screw Pump With Whole Cover

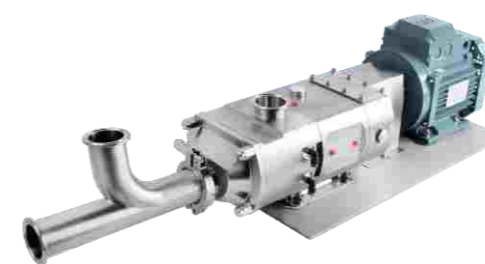


全防护罩可减少因泵驱动装置不规则的卫生死角同时保护电机和保护人身安全。

Pump with whole protecting cover can reduce dead angle due to irregular pump driving device. Protecting cover can also protect motor and personal safety.

#### 物料混合接口螺杆泵

##### Screw Pump With Material Mixing Connector



该配置前端加装专用物料混合接口，该装置非常的简单方便，既可以安装在前盖，也可以安装上泵体上。

The front end of this configuration is equipped with a dedicated material mixing connector. The device is very simple and convenient, and can be installed either on the front cover or on the pump body.

#### 外置安全系统螺杆泵

##### Screw Pump With External Safety System



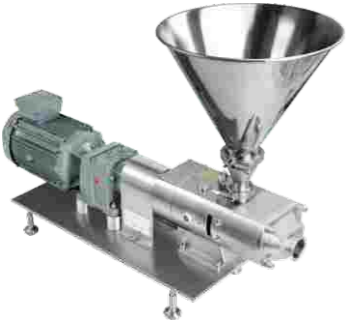
外置安全系统，可有效解决因管路堵塞或其他问题引起的出口压力瞬间增加而损坏仪器和设备。

Screw pump with external safety system can effectively solve damage to instrument and equipment caused by the sudden increase of the outlet pressure caused by pipeline blockage or other problems.

# VERY RICH AND FLEXIBLE COMBINATION 非常丰富而灵活的组合

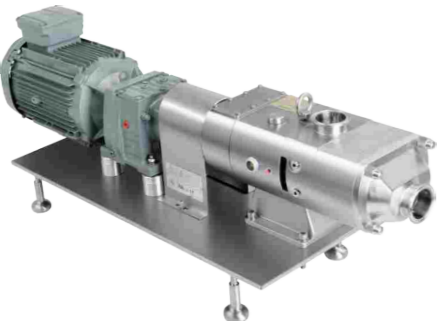
# MOTOR DIRECT-CONNECTED SCREW PUMP SELECTION TABLE 电机直连式螺杆泵选型表

**法兰料斗螺杆泵**  
**Screw Pump With Flanged Hopper**




该泵设计有方形法兰料斗和圆形法兰料斗两种，配置有料斗和螺杆泵，该装配主要用来加入粉体、颗粒、固体等各种加料所需功能。  
There are two kinds of flanged hopper, square and circular. It is equipped with a hopper and a screw pump. This pump is mainly used to add material such as powder, granules and solids.

**机械无极调速螺杆泵**  
**Mechanical stepless speed regulating screw pump**




该泵配置了机械无极变速箱，可通过变速箱的手轮调速器，调控至工况所需要的转速。具有操作简单，方便，成本低。  
The pump is equipped with mechanical stepless gearbox, can be adjusted to the required speed through the gearbox's handwheel governor. It is simple-operating, convenient and low cost.

**移动车+控制盒螺杆泵**  
**Screw Pump With Trolley And Console**

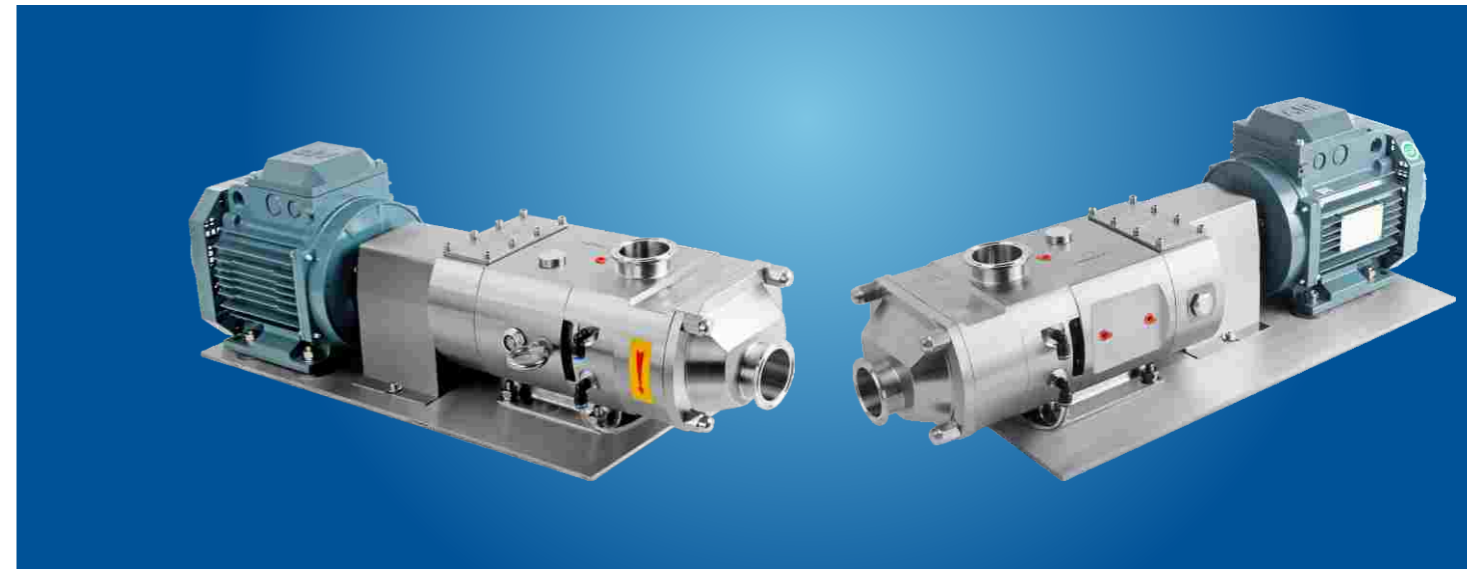


移动车带有两个轮子刹车。  
控制盒有两种设计：  
1) 基本控制：启动、停止、急停、电机过载保护。  
2) 变频控制：启动、停止、急停、电机过载保护、变频器、指示灯。  
Two wheels of the trolley can brake.  
The console is available in two designs:  
1) Basic control: start, stop, emergency stop, motor overload protection.  
2) Frequency conversion control: start, stop, emergency stop, motor overload protection, frequency converter, indicator light.

**伺服电机减速输出螺杆泵**  
**Servo motor speed reducing output screw pump**

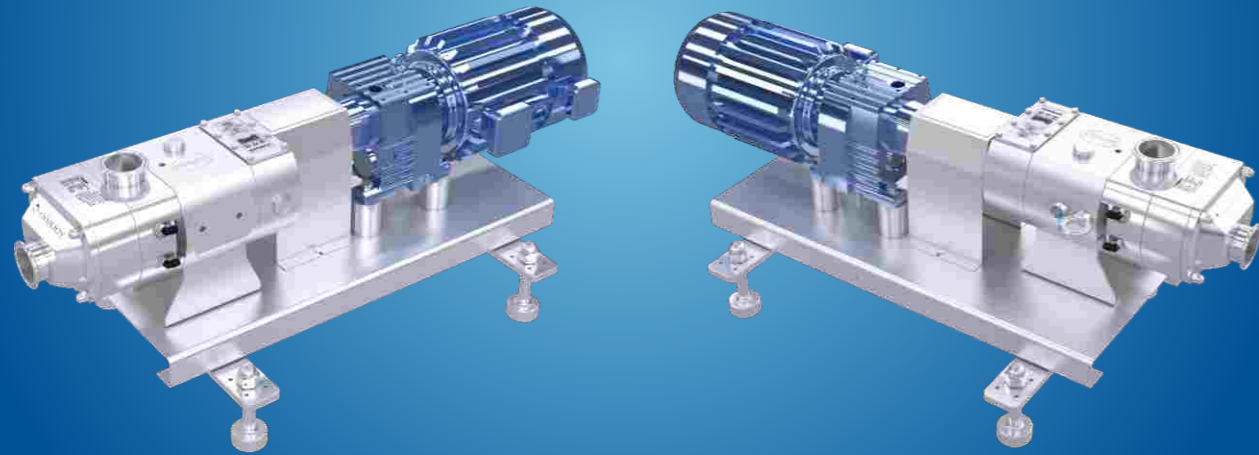


伺服电机减速机输出是目前较为先进的控制方法，它具有精度高、噪音低、体积小、重量轻、恒力扭矩等。用户可根据需要编辑个性化程序实现多任务、多功能控制。  
Servo motor reducer output is a relatively advanced control method currently. It is with high precision, low noise, small size, light weight, constant torque, etc.. Users can edit personalized program to achieve multi-tasking and multi-function control as needed.



型号 Model	螺杆间距 Screw spacing (mm)	压力 Pressure (bar)	电机 Motor (kw)	最大固体 Max solid (mm)	每转排量 Flow per rotation (L/r)	建议转速 范围(分钟) Suggested speed range (r/min)	建议转速 流量范围 Suggested flow range (m <sup>3</sup> /h)	默认转速 (可调范围) Speed / adjustable range (Hz)	进、出口 Input outlet (Size)	重量 Net weight (kg)	
LG-L/R-20-18	18	4	1.5	8.5	0.07	100-2000	0.42	8.40	950(6P) (0-100hz可调)	1"-2" 1"-2"	94
		7	2.2								103
		10	3								118
		14	4								126
		18	5.5								140
LG-L/R-20-26	26	3	1.5	12.5	0.10	100-2000	0.60	12.0	950(6P) (0-100hz可调)	1"-2" 1"-2"	94
		5	2.2								103
		8	3								118
		11	4								126
		15	5.5								140
LG-L/R-20-39	39	3	1.5	23.5	0.15	100-2000	0.90	18.0	950(6P) (0-100hz可调)	1"-2" 1"-2"	94
		5	2.2								103
		8	3								118
		11	4								126
		15	5.5								140
LG-L/R-30-24	24	4	3	12.5	0.14	100-2000	0.84	16.8	950(6P) (0-100hz可调)	2.5"-3" 2.5"-3"	172
		8	4								182
		12	5.5								218
		18	7.5								289
		3	3								172
LG-L/R-30-40	40	7	4	17.5	0.25	100-2000	1.44	28.8	950(6P) (0-100hz可调)	2.5"-3" 2.5"-3"	182
		10	5.5								218
		15	7.5								289
		4	3								172
		8	4								182
LG-L/R-30-60	60	12	5.5	29.5	0.37	100-2000	2.22	44.4	950(6P) (0-100hz可调)	2.5"-3" 2.5"-3"	218
		18	7.5								289
		4	3								172
		8	4								182
		12	5.5								218
LG-L/R-70-32	32	4	4	15.5	0.47	100-1200	2.82	33.8	750(8P) (0-100hz可调)	3"-4" 3"-4"	391
		8	5.5								411
		12	7.5								428
		18	11								462
		4	4								391
LG-L/R-70-54	54	7	5.5	23.5	0.79	100-1200	4.74	56.9	750(8P) (0-100hz可调)	3"-4" 3"-4"	411
		10	7.5								428
		15	11								462
		4	4								391
		8	5.5								411
LG-L/R-70-80	80	12	7.5	39.5	1.17	100-1200	7.02	84.2	750(8P) (0-100hz可调)	3"-4" 3"-4"	411
		18	11								428
		4	4								391
		8	5.5								411
		12	7.5								428

# VARIABLE FREQUENCY MOTOR HELICAL GEAR SCREW PUMP SELECTION TABLE 变频电机斜齿轮螺杆泵选型表



型号 Model	螺杆间距 Screw spacing (mm)	压力 Pressure (bar)	电机 Motor (kw)	最大固体 Max solid (mm)	每转排量 Flow per rotation (L/r)	建议转速 范围(分钟) Suggested speed range (r/min)	建议转速 流量范围 Suggested flow range (m <sup>3</sup> /h)	泵头进口 Pump head inlet	泵体出口 Pump body outlet	重量 Net weight (kg)
LG-L/R-20-18	18	5	1.1	8.5	0.09	100-1000	0.54	5.4	1.5"-2"	95
		10	1.5							104
		14	2.2							112
		18	3							120
		20	4							133
LG-L/R-20-26	26	4	1.1	12.5	0.13	100-1000	0.78	7.8	1.5"-2"	95
		8	1.5							104
		12	2.2							112
		16	3							120
		18	4							133
LG-L/R-20-48	48	5	1.1	23.5	0.09	100-1000	0.54	5.4	1.5"-2"	95
		10	1.5							104
		14	2.2							112
		18	3							120
		20	4							133
LG-L/R-30-26	26	5	3	12.5	0.20	100-1000	1.2	12.0	2.5"-3"	166
		10	4							179
		15	5.5							288
		20	7.5							301
		4	3							166
LG-L/R-30-36	36	8	4	17.5	0.29	100-1000	1.74	17.4	2.5"-3"	179
		12	5.5							288
		16	7.5							301
		5	3							166
		10	4							179
LG-L/R-30-60	60	5	5.5	29.5	0.20	100-1000	1.2	12.0	2.5"-3"	384
		10	7.5							397
		15	11							534
		20	15							553
		5	5.5							384
LG-L/R-70-32	32	4	5.5	15.5	0.53	100-1000	3.18	31.8	3"-4"	397
		8	7.5							534
		12	11							553
		16	15							553
		5	5.5							384
LG-L/R-70-48	48	8	7.5	23.5	0.79	100-1000	4.74	47.4	3"-4"	397
		12	11							534
		16	15							553
		5	5.5							384
		10	7.5							397
LG-L/R-70-80	80	15	11	39.5	0.53	100-1000	3.18	31.8	3"-4"	534
		20	15							553
		5	5.5							384

# HIGH PURITY ULTRA-LONG LIFE, LATEST DESIGN 高洁净/超长寿命/最新设计

## 产品特点和优势 Product Features and Advantages

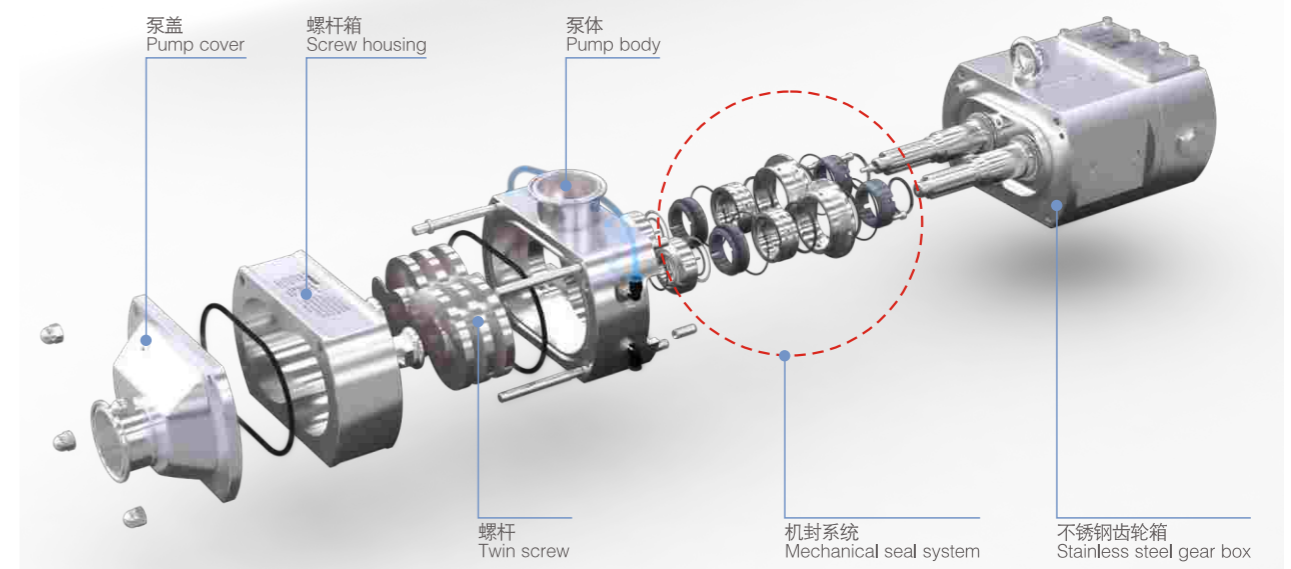
- ◆具有CIP抽取和输送能力；泵体和泵盖可完全排放液体；
- ◆与介质接触区域轴和密封连接，无螺丝；
- ◆单机封和双机械密封配置选项；
- ◆所有型号均包含密封冲洗端口，可选配双机械密封；
- ◆蒸汽在线可用；
- ◆全不锈钢设计，包含齿轮箱。
- ◆With CIP extraction and delivery capacity; pump body and pump cover can discharge liquid completely.
- ◆At the area contacting with medium, shaft and seal connect without screw.
- ◆Single and Double mechanical seal options.
- ◆All models have seal flush ports for optional double mechanical seal.
- ◆Steam online available.
- ◆All stainless steel design, including gearbox.

## 简单方便、安装、拆卸 Simple installation and disassembly

- ◆螺杆和轴采用花键连接设计、安装、拆卸简单方便；
- ◆无需更改配置，即可顺时针和逆时针旋转使用；
- ◆可以在各种粘度下使用该泵，而无需更换配置等。
- ◆The screw and shaft are connected by spline, it's simple and convenient for installation and disassembly.
- ◆Rotate clockwise and counterclockwise without changing configuration.
- ◆The pump can be used for various viscosities without changing configurations, etc.

## 产品特点 Features

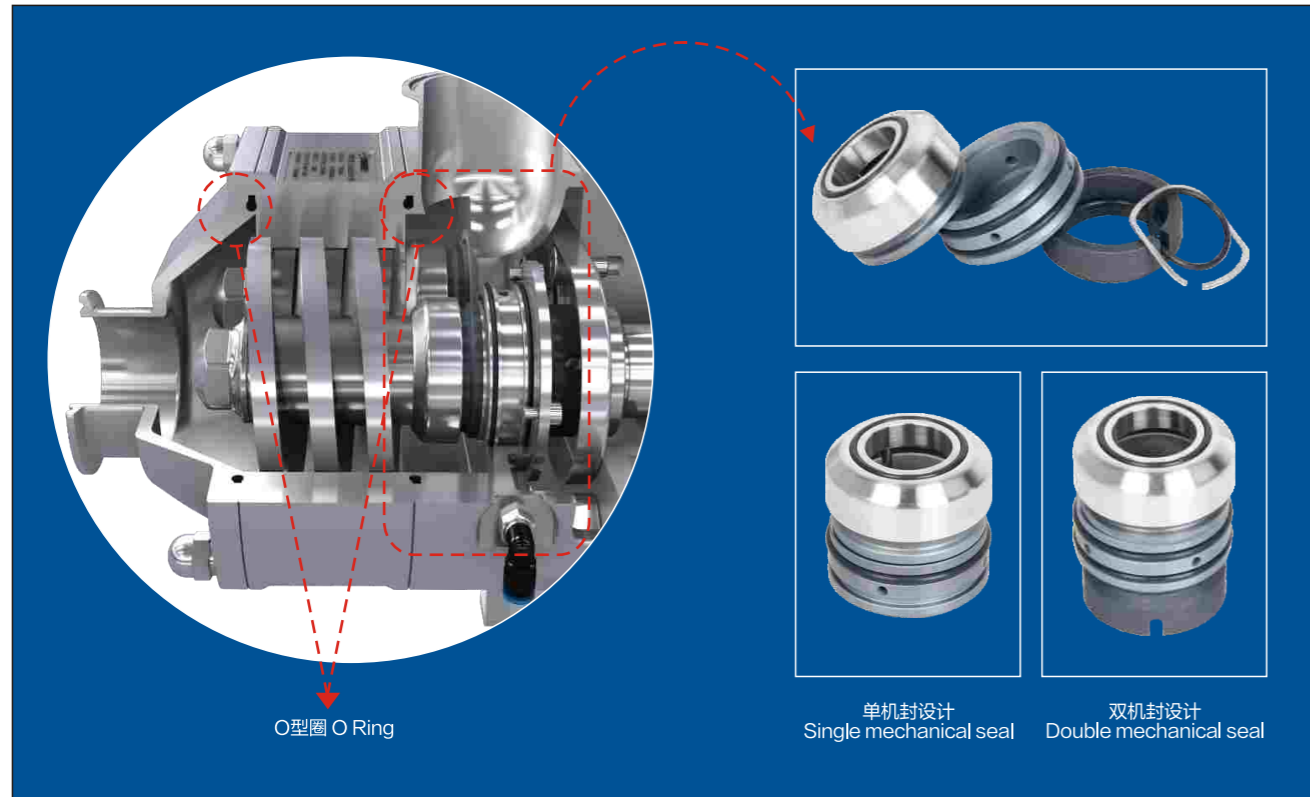
- ◆压力高达300 psi(20.0bar)；
- ◆专为延长使用寿命而设计的特殊螺杆锁紧螺母；
- ◆与介质接触区域没有轴承和螺钉；
- ◆大直径17-4PH轴，具有更高的强度和刚度。有助于减少振动并延长密封寿命；
- ◆采用高精度重型滚针轴承；
- ◆润滑油轴承，可在整个速度，温度和压力范围内进行正向润滑。
- ◆Pressure up to 300 psi (20.0 bar).
- ◆Special screw lock nut designed to extend service life.
- ◆There are no bearings and screws at the area contacting with medium.
- ◆Large diameter 17-4PH shaft for higher strength and stiffness, helping to reduce vibration and extend seal life.
- ◆High precision heavy duty needle roller bearings.
- ◆Oil-lubricated bearings can be forward lubrication over the entire speed, temperature and pressure range.



# TWIN SCREW PUMP

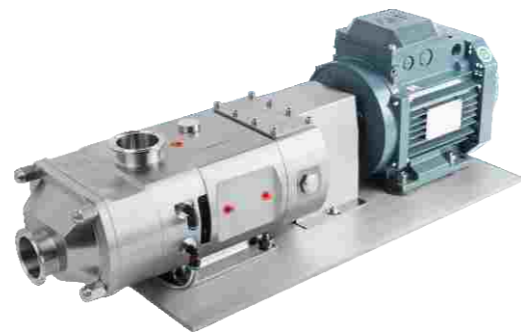
## MECHANICAL SEAL DESIGN

### 双螺杆泵机封设计



#### 机封配置 Mechanical Seal Configuration

- 1) SIC/C/EPDM      4) SIC/SIC/EPDM      7) TC/TC/EPDM
- 2) SIC/C/FKM      5) SIC/SIC/FKM      8) TC/TC/FKM
- 3) SIC/C/HNBR    6) SIC/SIC/HNBR     9) TC/TC/HNBR



#### 宽电压电机 Wide Input Range Motor

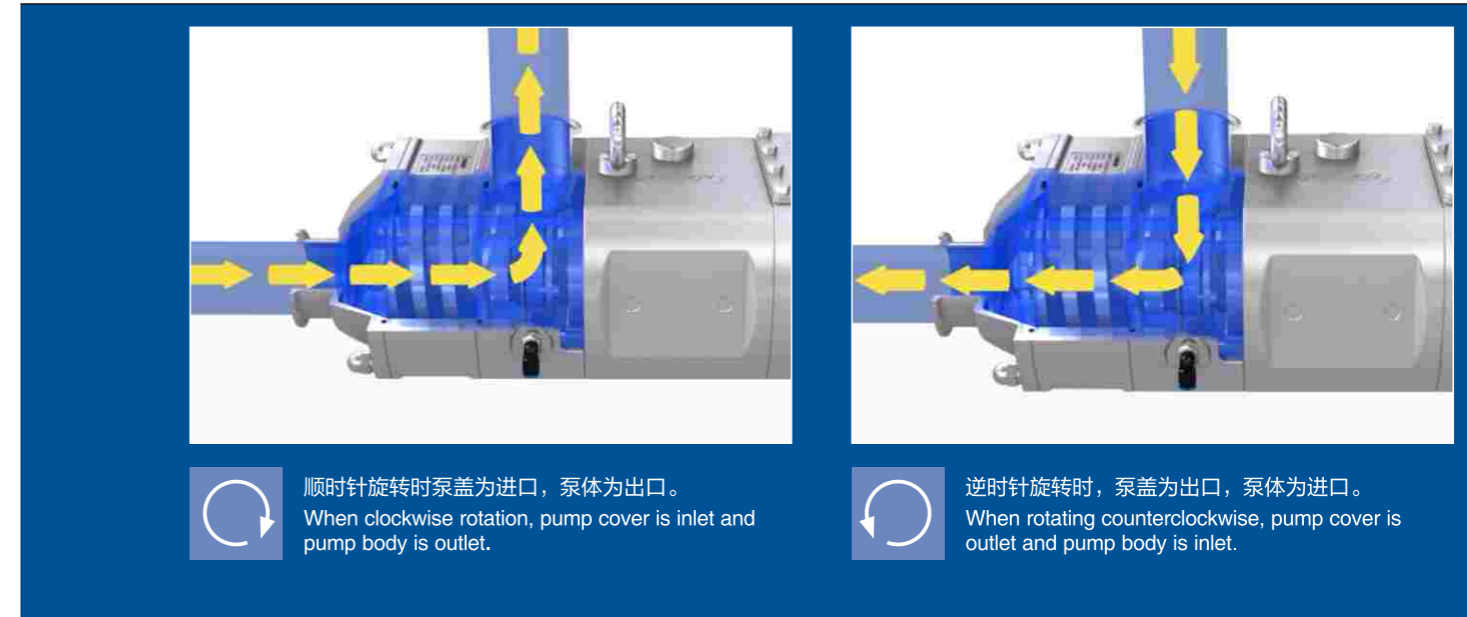
功率 Power(kw)	电压范围 Voltage	功率 Power(kw)	电压范围 Voltage
0.55kw	210V-230V/50HZ 360V-400V/50HZ 420V-460V/60HZ	4.0-5.5kw	360V-400V/50HZ 630V-690V/50HZ 420V-460V/60HZ
0.75kw		7.5-11kw	
1.1-1.5kw	15-18.5kw		
2.2-3.0kw	22-30kw		

注意: 电机采用 IEC EN IE2 能效等级, PTC 热敏电阻。(相当于中国二级能效)  
 Note: The motor adopts IEC EN IE2 energy efficiency class, PTC thermistor. (Corresponding to China two energy efficiency)  
 注意: 其他电机功率、电压、频率等, 请联系东正。  
 Note: Other motor power, voltage, frequency, etc., please contact DONJOY.

# PUMP INLET/OUTLET

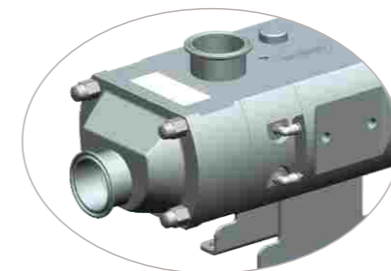
## CONNECTION STANDARD

### 泵进口/出口连接标准

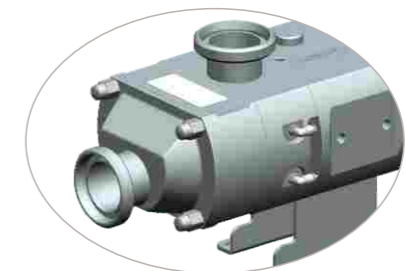


顺时针旋转时泵盖为进口, 泵体为出口。  
 When clockwise rotation, pump cover is inlet and pump body is outlet.

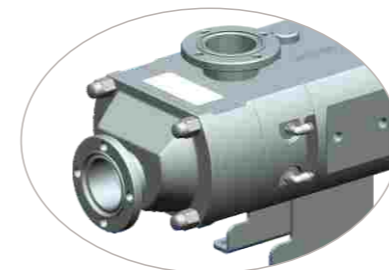
逆时针旋转时, 泵盖为出口, 泵体为进口。  
 When rotating counterclockwise, pump cover is outlet and pump body is inlet.



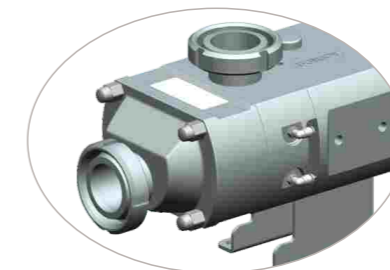
卡箍式 Clamp



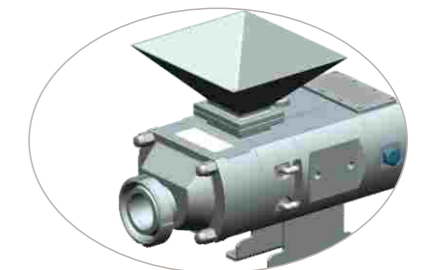
螺纹式 Threaded



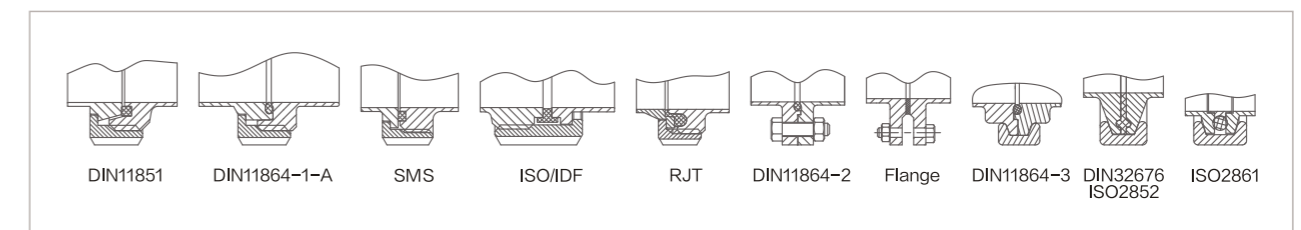
无菌法兰式 Aseptic flange



螺母式 Nut type



法兰料斗式 Flange hopper



# TWIN SCREW PUMP

## MODEL DESCRIPTION

### 双螺杆泵型号说明

DJ-LGR 20 18 M 1.5"/1.5" S 1-3T 4bar 2.2kw 380V 50Hz MT

驱动方式: 电机驱动(MT); 机械无极减速机(MBW); 变频器专用减速机(WR-QA); 一般变频减速机(WR);  
Drive mode: motor drive (MT); mechanical stepless reducer (MBW); frequency inverter dedicated reducer (WR-QA); general frequency variable reducer (WR)

电机频率 Motor frequency: 50HZ; 60HZ

电压 Voltage: 110V 220V 380V  
(详见选型表 See the selection table for details)

电机功率 Motor Power: 1.1kw 1.5kw 2.2kw.....

螺杆泵压力(详见选型表)Screw pump pressure (see selection table for details)

螺杆泵流量(详见选型表)Screw pump flow (see selection table for details)

接口标准 Connection standard:  
DIN (D) SMS (S) 3A(A) RJT (R) ISO/IDF (I)

进出口规格 Size of inlet and outlet

连接方式Connection:  
螺纹thread(M) 卡箍clamp(C) 法兰flange(F)

螺杆间距 Screw space:  
18mm; 26mm; 36mm; 32mm; 48mm

螺杆泵型号 Screw pump model

螺杆泵进出口方向代码: LGR垂直式(推荐); LGL水平式  
Screw pump inlet and outlet direction code:  
LGR vertical type (recommended); LGL horizontal type

With motor screw pump selection For example:  
螺杆泵选型(带有电机), 举例: LGR 20-18-M-1.5"/1.5"-S/1-3T-4bar/2.2kw-380v-50Hz-MT

Screw pump selection (without motor), for example  
螺杆泵选型(不带电机), 举例: LGR 20-18-M-1.5"/1.5"-S

#### ⚠️ 电机和减速机相关技术说明

- ◆ 电机驱动(MT), 是指螺杆泵是直接通过电机来驱动, 也可以通过变频器控制电机频率, 达到调速的目的;
- ◆ 机械无极减速机(MBW), 该配置通过机械摩擦无极调节器, 手动调节的方式实现输出转速可调。
- ◆ 变频专用减速机(WR-QA), 该配置是通过变频专用电机, 利用变频器来控制电机频率达到调速的目的。(变频专用电机配有独立风扇, 可调频率范围: 0-80HZ)
- ◆ 一般变频减速机(WR), 该配置是可通过变频器来控制电机频率, 达到调速的目的(一般变频电机未配置独立风扇, 可调频率范围: 30-60HZ); 如果未配置变频器, 那么输出转速是根据电机转速和减速机齿数比的关系输出最终的转速(通常称之为定速比输出)

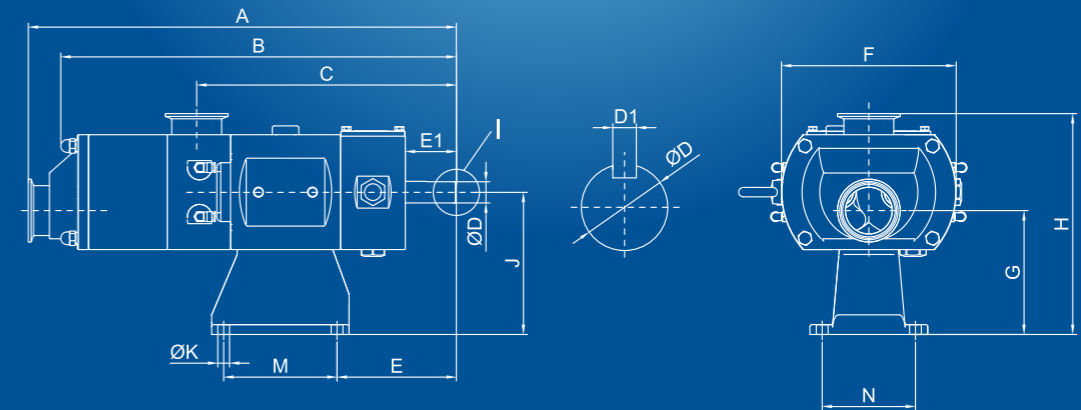
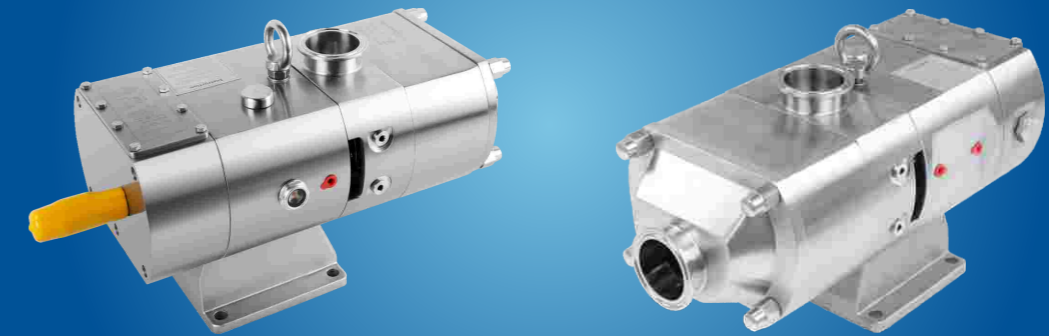
#### Motor and reducer related technical instruction

- ◆ Motor drive (MT) means that the screw pump is driven directly by the motor, or the frequency of the motor can be controlled by the inverter to achieve the purpose of speed adjusting.
- ◆ Mechanical stepless reducer (MBW), this configuration is adjustable by means of mechanical friction stepless regulator, manual adjustment
- ◆ Frequency conversion dedicated reducer (WR-QA), this configuration is through the frequency conversion dedicated motor, using the frequency converter to control the motor frequency to achieve the purpose of speed regulation. (Inverter dedicated motor is with independent fan, adjustable frequency range: 0-80HZ).
- ◆ General variable frequency reducer (WR), this configuration can control the motor frequency through the inverter to achieve the purpose of speed regulation (general inverter motor is not equipped with independent fan, adjustable frequency range: 30-60HZ); if the inverter is not configured, then the output speed is based on the relationship between the motor speed and the gear ratio of the reducer. (usually called the fixed speed ratio output).

# DJ-LGR

## screw pump dimension data chart

### DJ-LGR 螺杆泵尺寸数据图



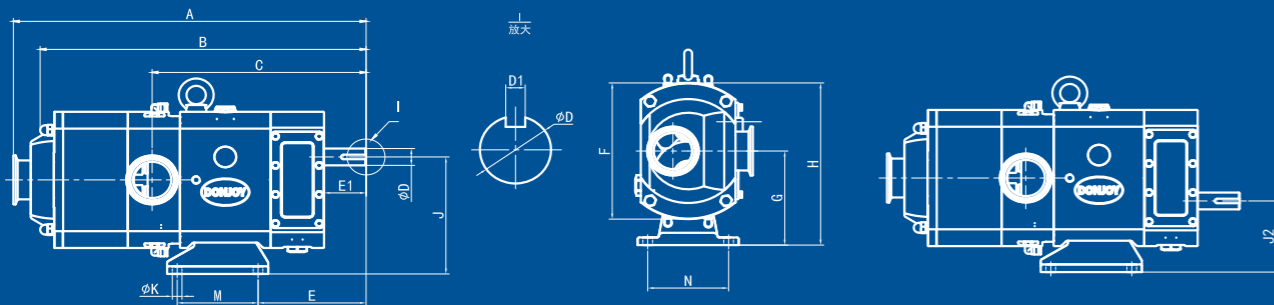
LG-R螺杆泵尺寸数据图

系列 Model	Cover port (Inlet)	Body port (outlet)	外形安装尺寸 Assembly Dimension																			
			进口 Inlet	出口 Outlet	B	C	D	D1	E	E1	F	G	J	K	M	N	卡箍式 Clamp		螺纹式 Thread		法兰式 Flange	
																	A	H	A	H	A	H
DJ-LGR-20-18	1"-2"	1"-2"	385	265	22	6	122	52	178	127	145	12	116	95	436	225	445	234	447	231		
DJ-LGR-20-26	1"-2"	1"-2"	385	265	22	6	122	52	178	127	145	12	116	95	436	225	445	234	447	231		
DJ-LGR-20-39	1"-2"	1"-2"	385	265	22	6	122	52	178	127	145	12	116	95	436	225	445	234	447	231		
DJ-LGR-30-24	2.5"-3"	2"-3"	520	354	28	8	181	57.5	225	162	180	12	190	125	589	280	601	296	595	289		
DJ-LGR-30-40	2.5"-3"	2"-3"	520	354	28	8	181	57.5	225	162	180	12	190	125	589	280	601	296	595	289		
DJ-LGR-30-60	2.5"-3"	2"-3"	520	354	28	8	181	57.5	225	162	180	12	190	125	589	280	601	296	595	289		
DJ-LGR-70-32	3"-4"	3"-4"	634	411	42	8	196	73	322	206	183.5	18	300	194	720	376	727	383	730	386		
DJ-LGR-70-54	3"-4"	3"-4"	634	411	42	8	196	73	322	206	183.5	18	300	194	720	376	727	383	730	386		
DJ-LGR-70-80	3"-4"	3"-4"	634	411	42	8	196	73	322	206	183.5	18	300	194	720	376	727	383	730	386		



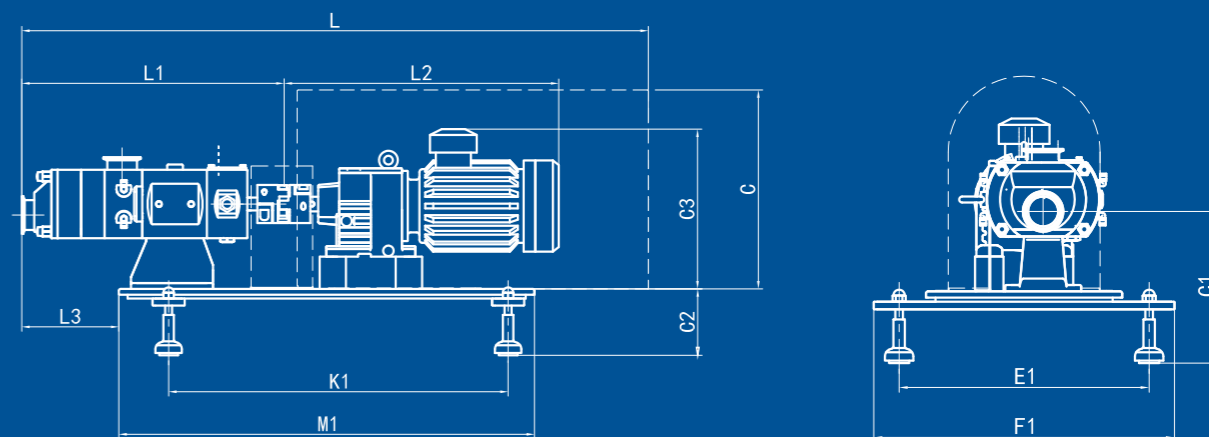
# DJ-LGL

## SCREW PUMP DIMENSION DATA CHART DJ-LGL 螺杆泵尺寸数据图



# LGR SERIES SCREW PUMP

## MOTOR+REDUCER DRIVE DATA CHART LGR 螺杆泵电机+减速机驱动-数据图



### LG-L 螺杆泵尺寸数据图

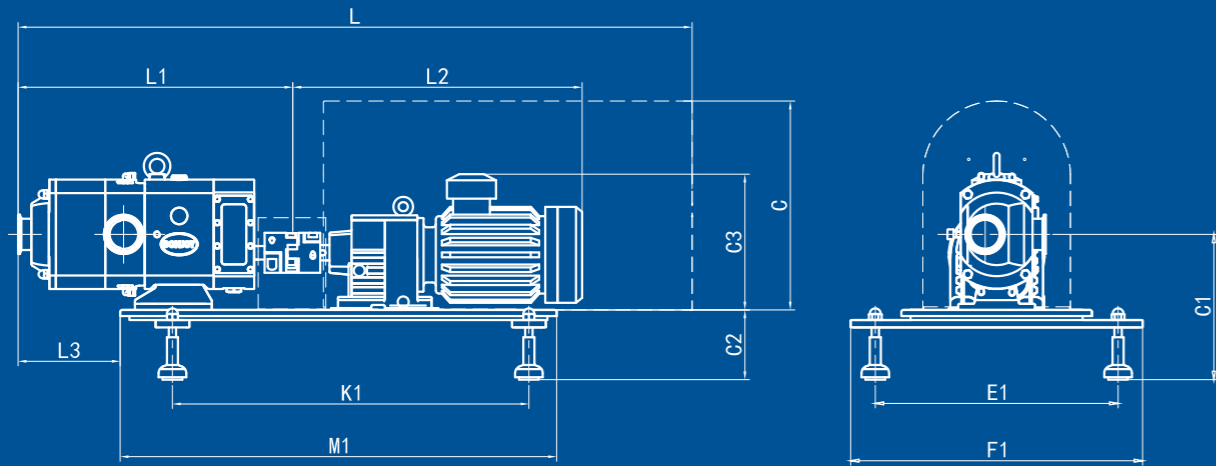
系列 Model	Cover port (Inlet)	Body port (outlet)	外形安装尺寸 Assembly Dimension																		
			进口 Inlet	出口 Outlet	B	C	D	D1	E	E1	F	G	H1	J	K	M	N	J2	卡箱式 Clamp	螺纹式 Thread	法兰式 Flange
																			A	A	A
DJ-LGL-20-18	1.5"-2"	1"-1.5"	385	265	22	6	133	52	178	123	217	153	12	100	100	93	436	445	447		
DJ-LGL-20-26	1.5"-2"	1"-1.5"	385	265	22	6	133	52	178	123	217	153	12	100	100	93	436	445	447		
DJ-LGL-20-39	1.5"-2"	1"-1.5"	385	265	22	6	133	52	178	123	217	153	12	100	100	93	436	445	447		
DJ-LGL-30-24	2.5"-3"	2"-3"	520	354	28	8	184	57.5	225	149	265	187	12	190	125	112	589	601	595		
DJ-LGL-30-40	2.5"-3"	2"-3"	520	354	28	8	184	57.5	225	149	265	187	12	190	125	112	589	601	595		
DJ-LGL-30-60	2.5"-3"	2"-3"	520	354	28	8	184	57.5	225	149	265	187	12	190	125	112	589	601	595		
DJ-LGL-70-32	3"-4"	3"-4"	634	411	42	8	196	73	322	226	390	/	18	300	193	166	720	727	730		
DJ-LGL-70-54	3"-4"	3"-4"	634	411	42	8	196	73	322	226	390	/	18	300	193	166	720	727	730		
DJ-LGL-70-80	3"-4"	3"-4"	634	411	42	8	196	73	322	226	390	/	18	300	193	166	720	727	730		

### LG-R 螺杆泵电机+减速机驱动尺寸数据图

系列 Model	电机功率 KW	外形安装尺寸 Assembly Dimension																	
		C	C1	C2	C3	E1	F1	K1	M1	L2	卡箱式 Clamp			螺纹式 Thread			法兰式 Flange		
											L	L1	L3	L	L1	L3	L	L1	L3
DJ-LGR-20	1.1KW	340	247	118.5	273	395	475	580	710	471	1071	446	166	1080	454	175	1082	457	177
	1.5KW	340	247	118.5	285	395	475	580	710	483	1071	446	166	1080	454	175	1082	457	177
	2.2KW	340	247	118.5	285	395	475	580	710	503	1071	446	166	1080	454	175	1082	457	177
	3.0KW	340	247	118.5	301	395	475	580	710	538	1071	446	166	1080	454	175	1082	457	177
DJ-LGR-30	3.0KW	360	286	123.5	337.5	475	555	620	810	538	1249	599	180	1261	611	192	1256	605	185
	4.0KW	360	286	123.5	336.5	475	555	620	810	590	1262	599	180	1274	611	192	1268	605	185
	5.5KW	360	286	123.5	330	475	555	620	810	680	1425	599	180	1437	611	192	1431	605	185
	7.5KW	360	286	123.5	339	545	625	755	980	707	1425	599	180	1437	611	192	1431	605	185
DJ-LGR-70	5.5KW	450	282.5	133.5	334	545	625	830	980	682	1558	730	180	1565	737	187	1568	740	190
	7.5KW	450	282.5	133.5	342	545	625	830	980	609	1558	730	180	1565	737	187	1568	740	190
	11KW-15KW	640	282.5	133.5	552.5	545	625	920	1130	866	1684	730	180	1691	737	187	1694	740	190

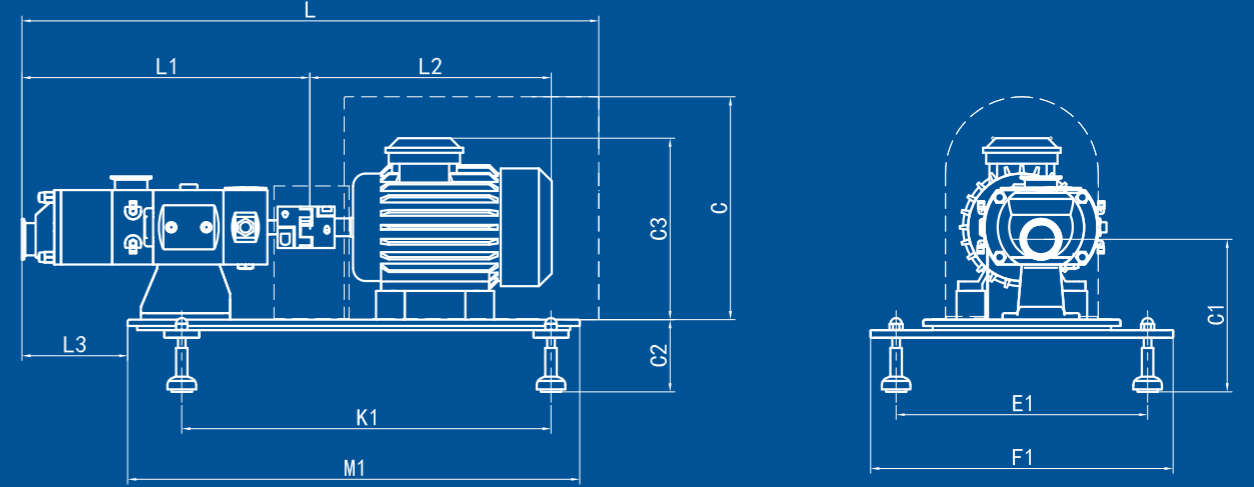
# LGR SERIES SCREW PUMP

MOTOR+REDUCER DRIVE DATA CHART  
LGR 螺杆泵电机+减速机驱动-数据图



# LGR SERIES

SCREW PUMP MOTOR DRIVE DATA CHART  
LGR 螺杆泵电机驱动-数据图



LG-L 螺杆泵电机驱动尺寸数据图

系列 Model	电机功率 KW	外形安装尺寸 Assembly Dimension																	
		C	C1	C2	C3	E1	F1	K1	M1	L2	卡箍式 Clamp			螺纹式 Thread			法兰式 Flange		
											L	L1	L3	L	L1	L3	L	L1	L3
DJ-LGL-20	1.1KW	340	241.5	118.5	221	395	475	580	710	471	1096	446	166	1105	454	175	1107	457	177
	1.5KW	340	241.5	118.5	233	395	475	580	710	483	1096	446	166	1105	454	175	1107	457	177
	2.2KW	340	241.5	118.5	233	395	475	580	710	503	1096	446	166	1105	454	175	1107	457	177
	3.0KW	340	241.5	118.5	250	395	475	580	710	538	1096	446	166	1105	454	175	1107	457	177
	4.0KW	340	277	118.5	284.5	395	475	580	710	590	1109	446	166	1115	454	175	1120	457	177
DJ-LGL-20	3.0KW	360	272.5	123.5	268.5	475	555	577	810	538	1252	599	180	1264	611	195	1258	605	188
	4.0KW	360	289.5	123.5	284.5	475	555	520	810	590	1265	599	180	1277	611	195	1271	605	188
	5.5KW	360	291	123.5	279	475	555	520	810	680	1427	599	180	1439	611	195	1433	605	188
	7.5KW	360	286	123.5	274	545	625	755	980	707	1427	599	180	1439	611	195	1433	605	188
DJ-LGL-20	5.5KW	450	359.5	133.5	315.3	545	625	830	980	682	1558	730	180	1565	737	187	1568	740	190
	7.5KW	450	359.5	133.5	324.8	545	625	830	980	609	1558	730	180	1565	737	187	1568	740	190
	11KW-15KW	640	359.5	133.5	535	545	625	920	1130	866	1684	730	180	1691	737	187	1694	740	190

LG-R 螺杆泵带直连电机尺寸数据图

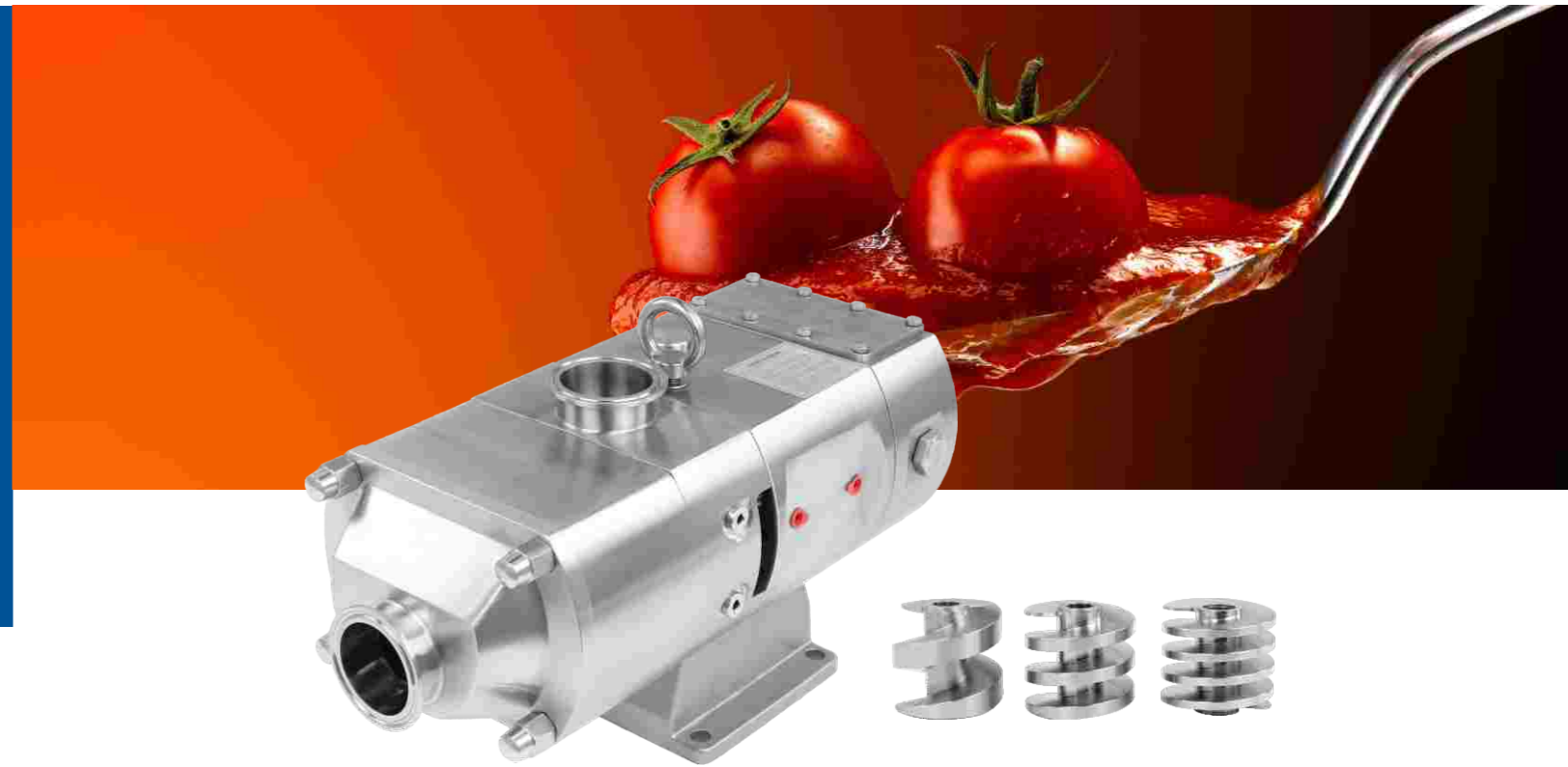
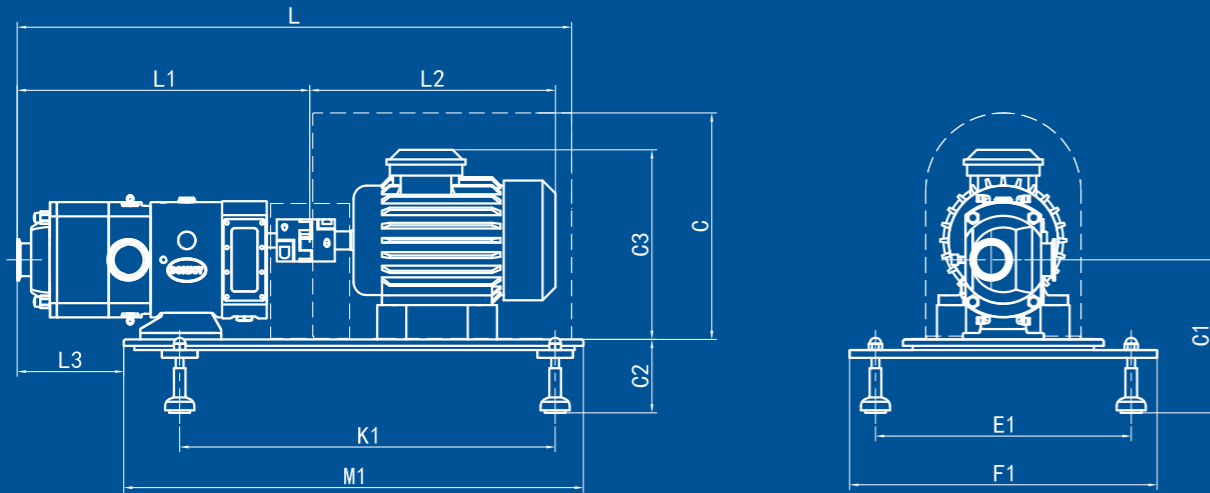
系列 Model	电机功率 KW	外形安装尺寸 Assembly Dimension																	
		C	C1	C2	C3	E1	F1	K1	M1	L2	卡箍式 Clamp			螺纹式 Thread			法兰式 Flange		
											L	L1	L3	L	L1	L3	L	L1	L3
DJ-LGR-20	1.5KW(6P)	350	245	118.5	285	395	475	580	710	386	905	446	166	914	454	175	916	457	177
	2.2KW(6P)	350	245	118.5	285	395	475	580	710	421	905	446	166	914	454	175	916	457	177
	3KW(6P)	370	245	118.5	314	475	555	618.5	810	489	988	446	166	997	454	175	999	457	177
	4-5.5KW(6P)	370	245	118.5	314	475	555	618.5	810	531	988	446	166	997	454	175	999	457	177
DJ-LGR-30	3KW(6P)	370	296	133.5	349.5	545	625	755	980	489	1179	599	180	1191	611	192	1185	605	185
	4-5.5KW(6P)	370	296	133.5	349.5	545	625	755	980	531	1179	599	180	1191	611	192	1185	605	185
	7.5KW(6P)	530	296	133.5	433.5	545	625	755	980	600	1255	599	180	1267	611	192	1261	605	185
DJ-LGR-70	4-5.5KW(8P)	475	280.5	133.5	442	545	625	820	1130	600	1440	730	180	1447	737	187	1450	740	190
	7.5KW(8P)	475	280.5	133.5	442	545	625	820	1130	658	1440	730	180	1447	737	187	1450	740	190
	11KW(8P)	505	280.5	133.5	457	545	625	820	1130	725	1494	730	180	1501	737	187	1504	740	190

# LGL SERIES

## SCREW PUMP MOTOR DRIVE DATA CHART LGL 螺杆泵电机驱动-数据图

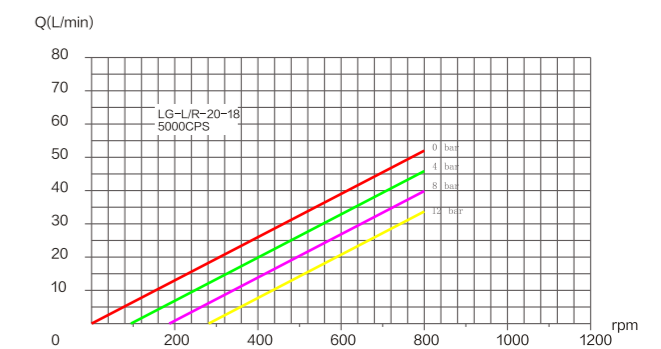
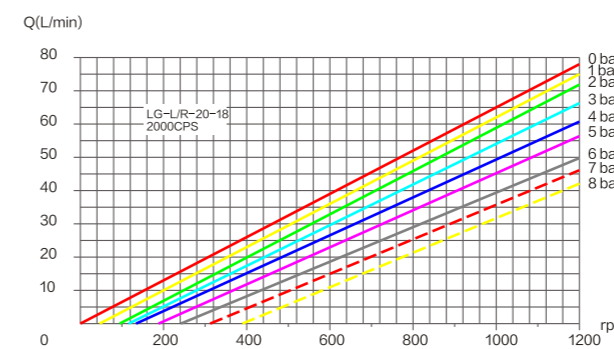
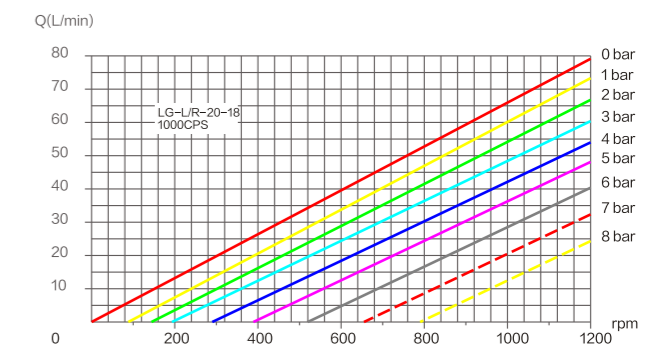
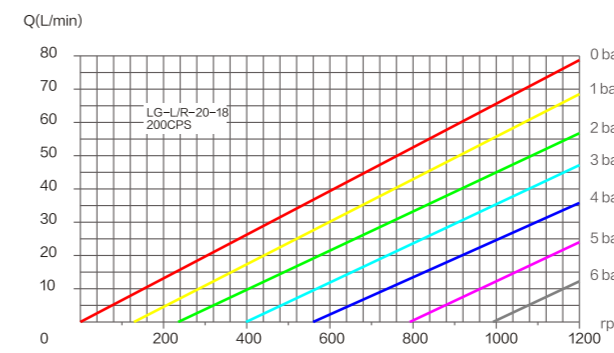
# SCREW PUMP CURVE

## 螺杆泵曲线图



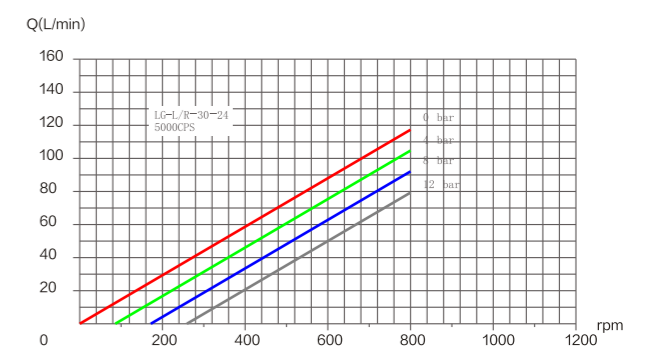
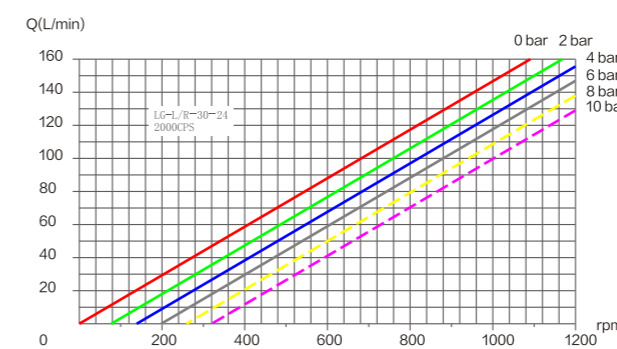
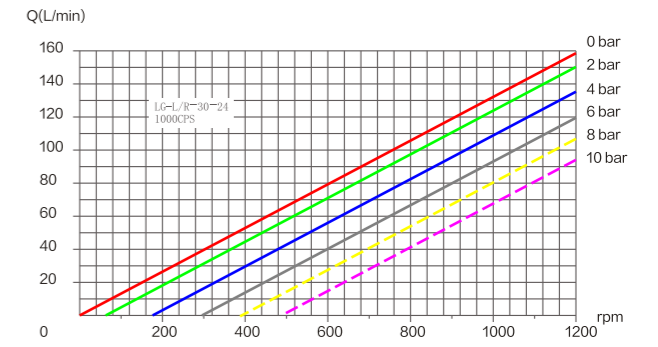
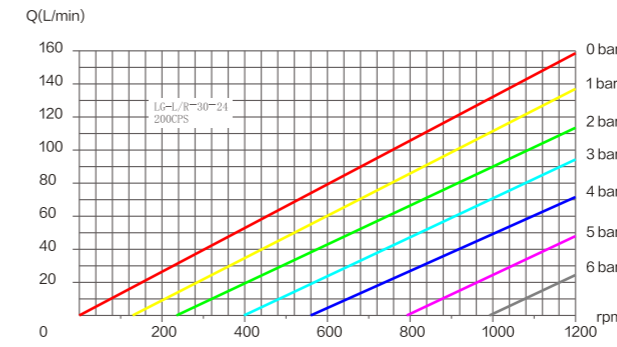
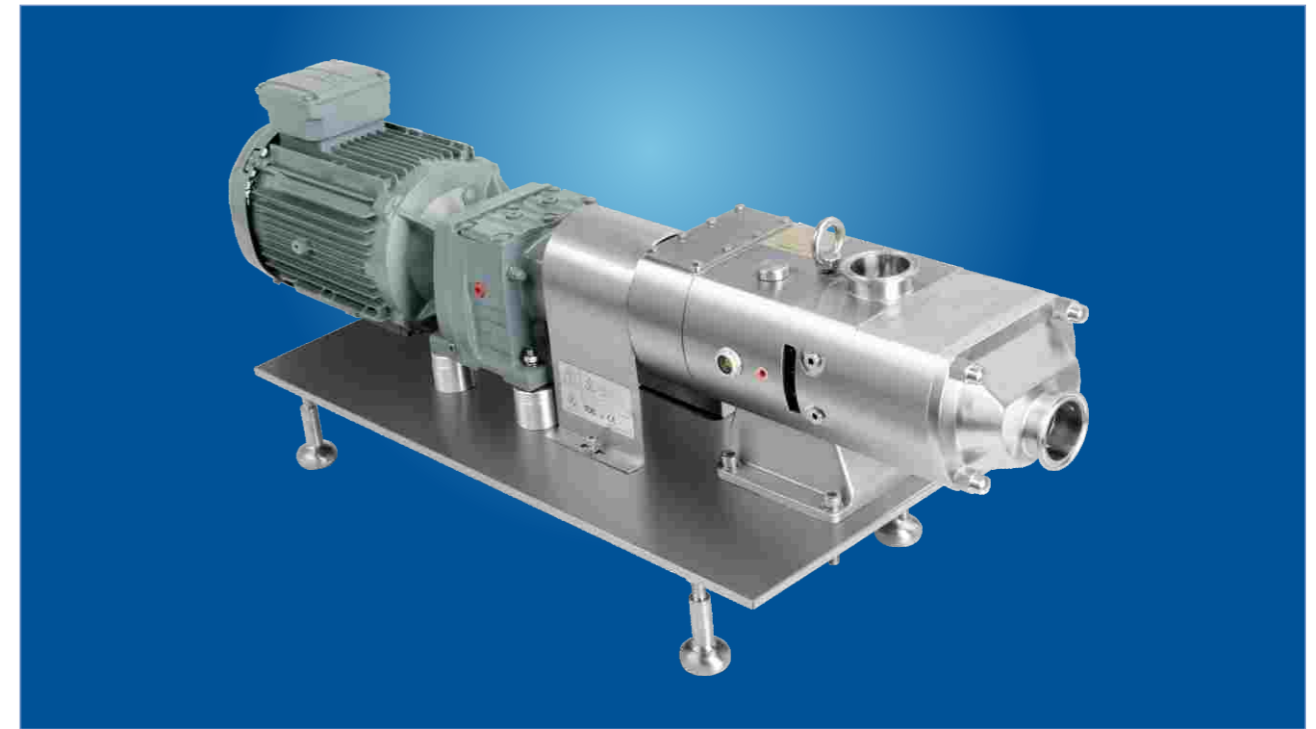
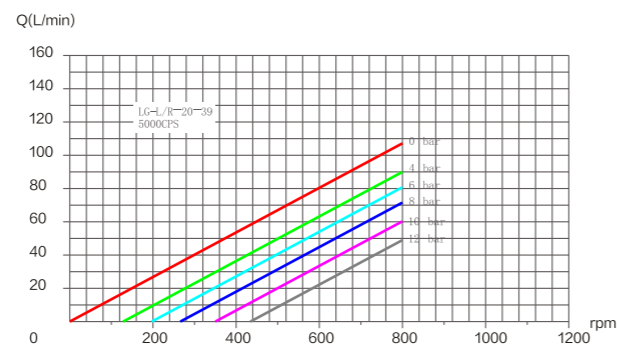
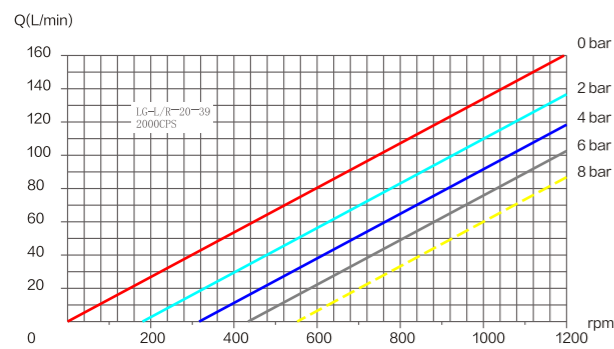
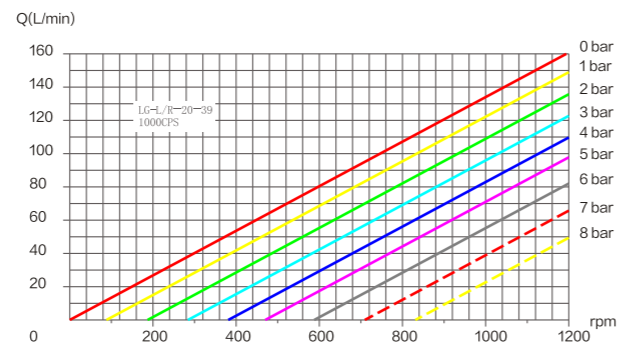
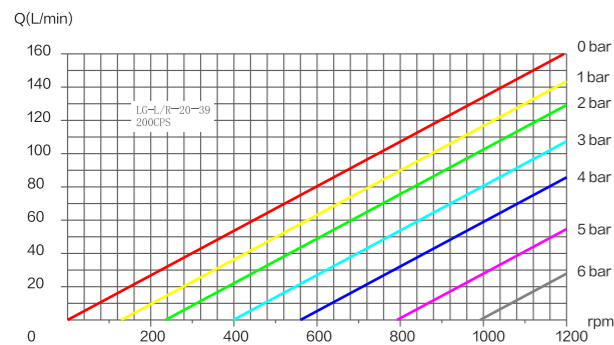
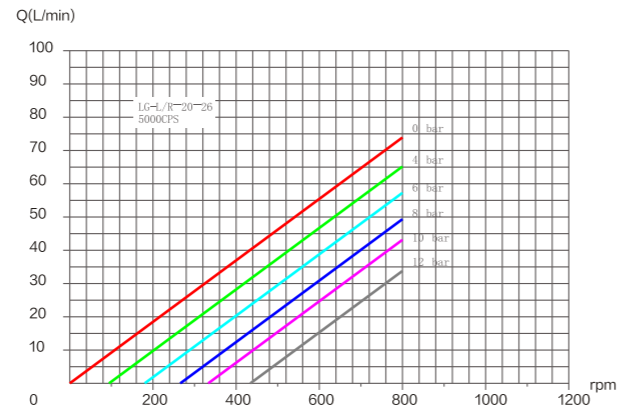
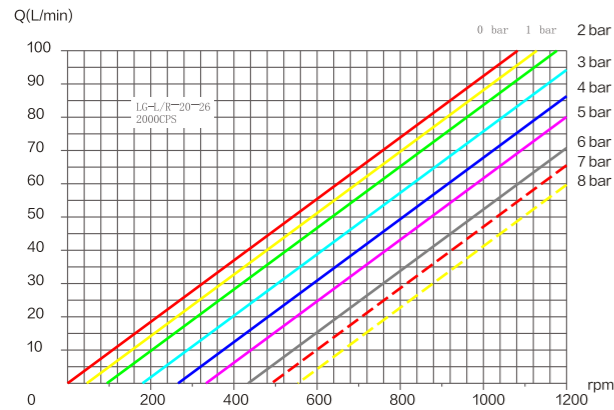
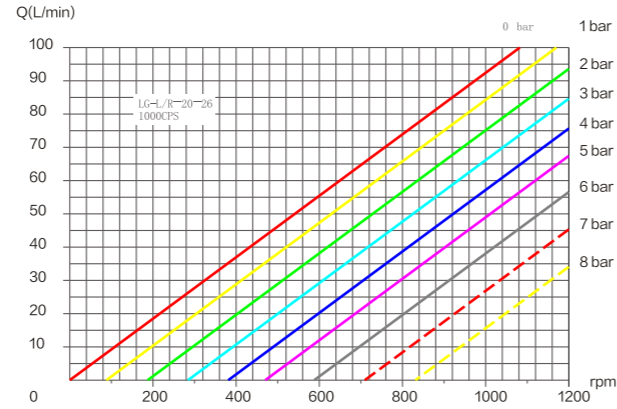
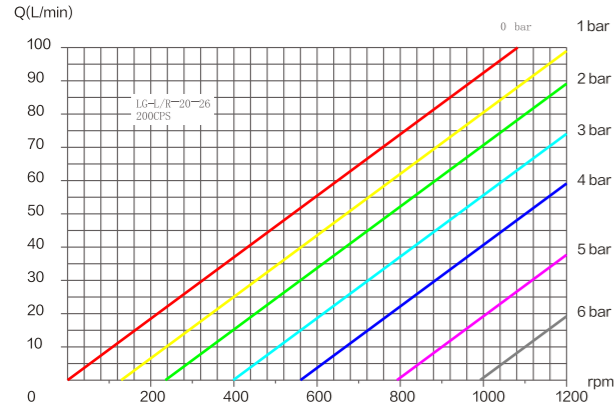
LG-L 螺杆泵带直连电机尺寸数据图

系列 Model	电机功率 KW	外形安装尺寸 Assembly Dimension																	
		C	C1	C2	C3	E1	F1	K1	M1	L2	卡箍式 Clamp			螺纹式 Thread			法兰式 Flange		
											L	L1	L3	L	L1	L3	L	L1	L3
DJ-LGL-20	1.5KW(6P)	350	241.5	118.5	293	395	475	580	710	386	905	446	166	914	454	175	916	457	177
	2.2KW(6P)	350	241.5	118.5	293	395	475	580	710	421	905	446	166	914	454	175	916	457	177
	3KW(6P)	370	241.5	118.5	322	475	555	618.5	810	489	987	446	166	996	454	175	998	457	177
	4-5.5KW(6P)	370	241.5	118.5	322	475	555	618.5	810	531	987	446	166	996	454	175	998	457	177
DJ-LGL-30	3KW(6P)	370	282.5	133.5	355.5	545	625	755	980	489	1179	599	183	1181	611	195	1185	605	188
	4-5.5KW(6P)	370	282.5	133.5	355.5	545	625	755	980	531	1179	599	183	1181	611	195	1185	605	188
	7.5KW(6P)	530	282.5	133.5	439.5	545	625	755	980	600	1255	599	183	1267	611	195	1261	605	188
DJ-LGL-70	4-5.5KW(8P)	475	359.5	133.5	426	545	625	820	1130	600	1440	730	180	1147	737	187	1450	740	190
	7.5KW(8P)	475	359.5	133.5	426	545	625	820	1130	658	1440	730	180	1147	737	187	1450	740	190
	11KW(8P)	505	359.5	133.5	455	545	625	820	1130	725	1493	730	180	1500	737	187	1503	740	190



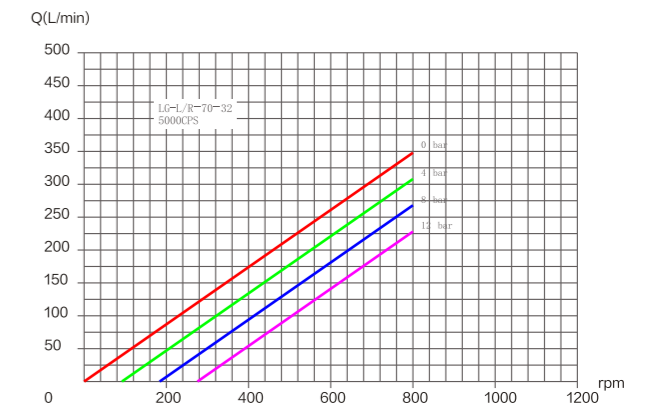
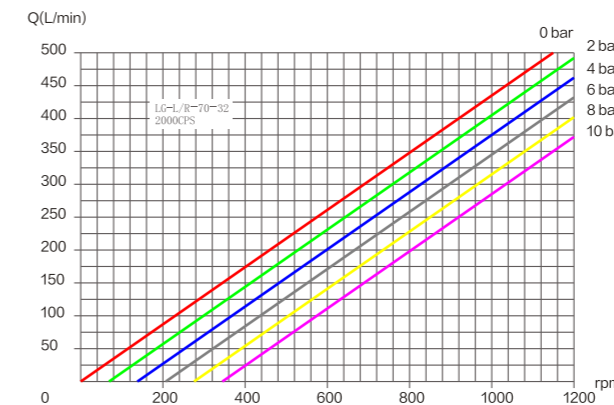
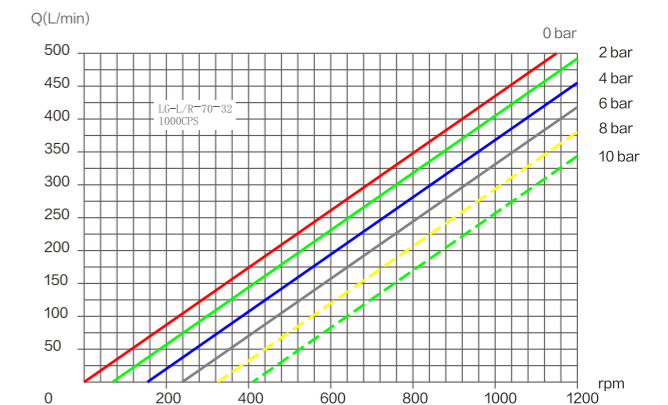
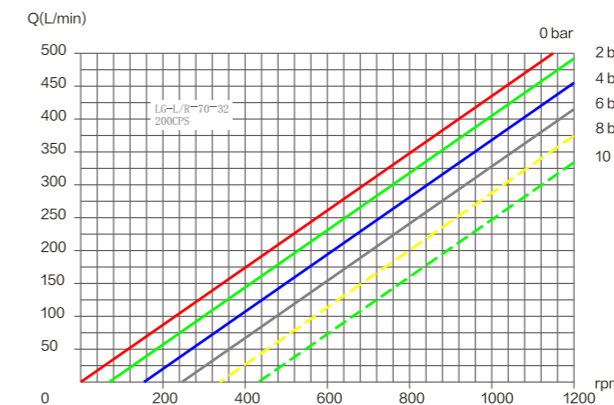
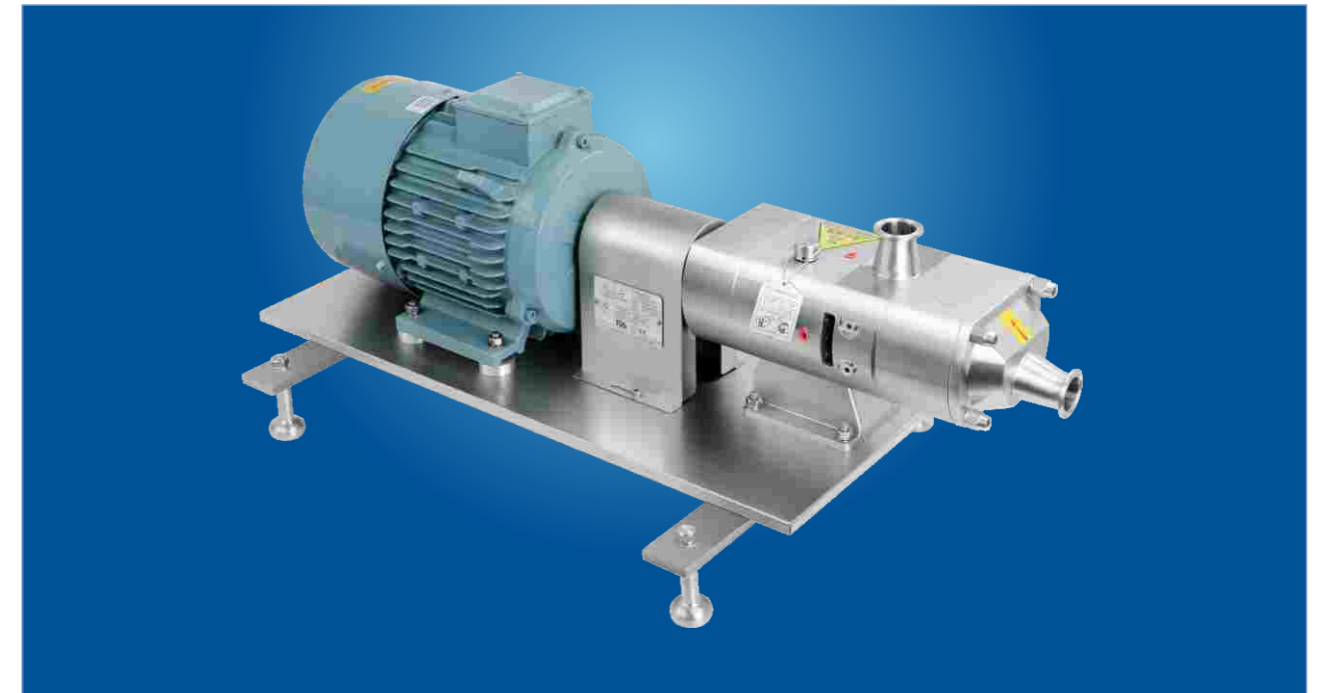
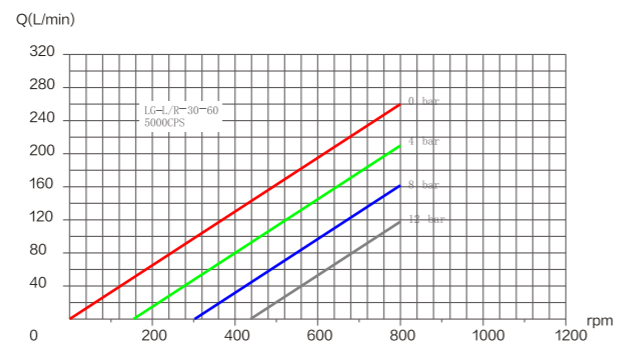
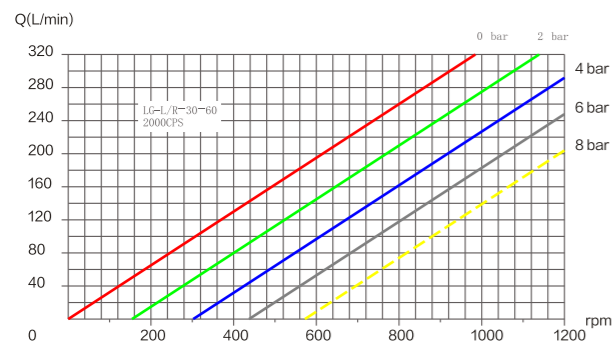
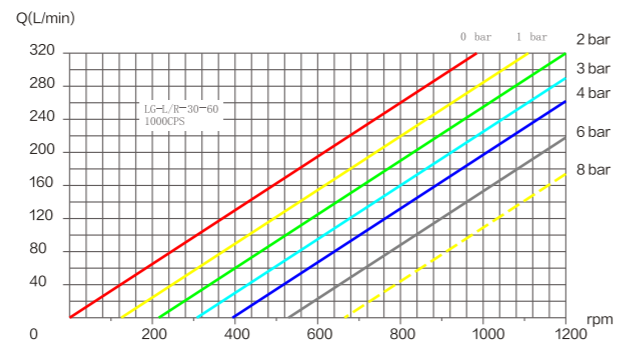
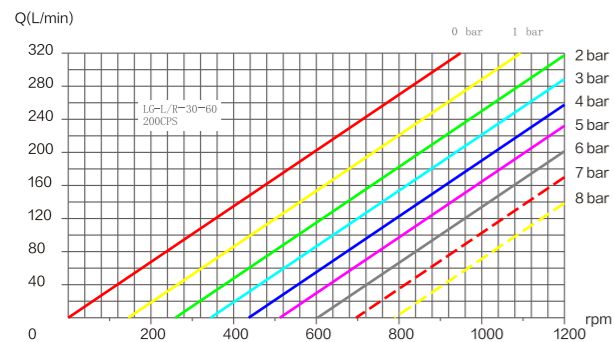
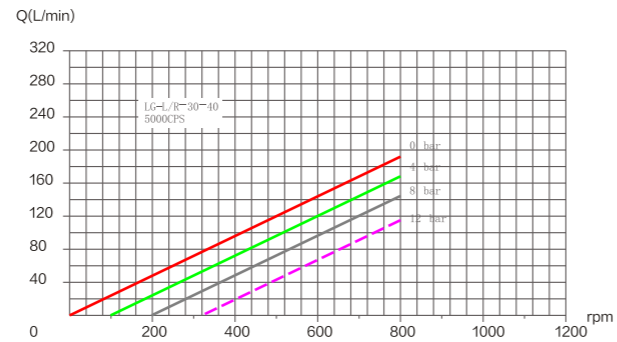
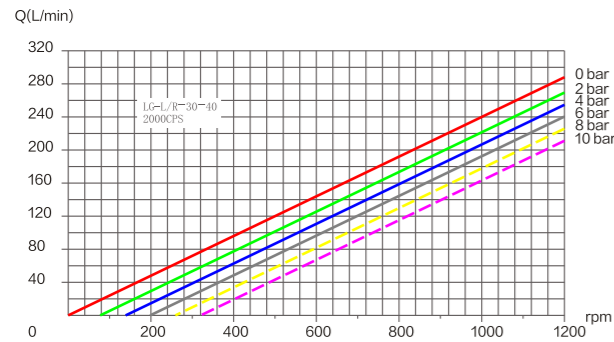
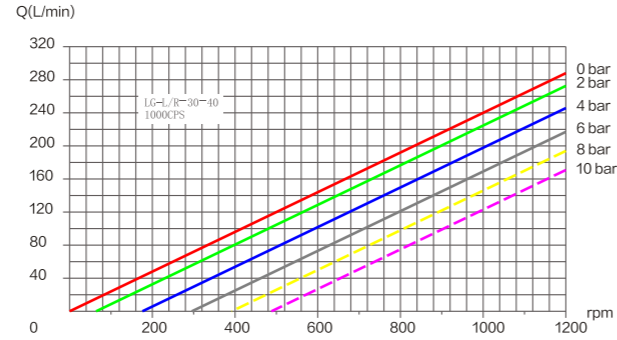
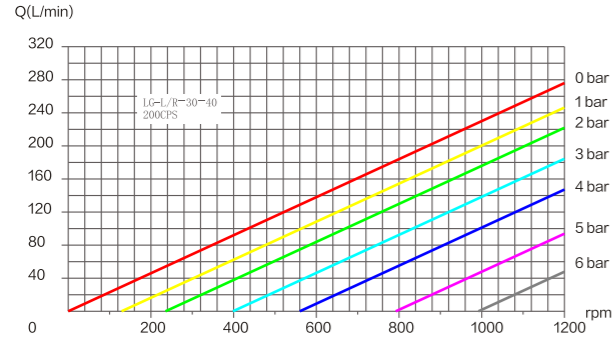
# SCREW PUMP CURVE

## 螺杆泵曲线图



# SCREW PUMP CURVE

## 螺杆泵曲线图

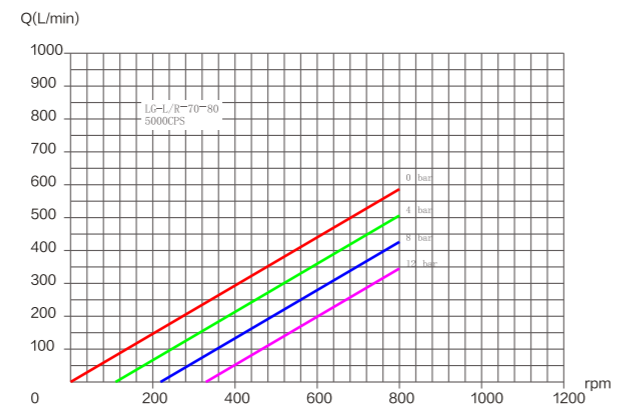
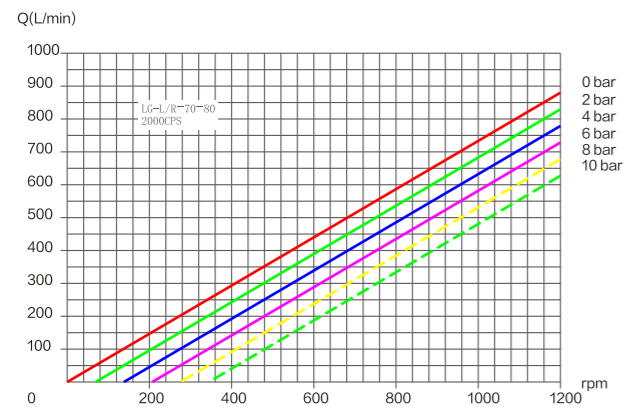
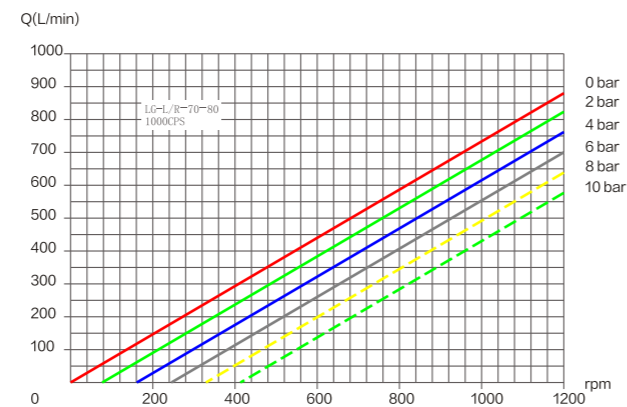
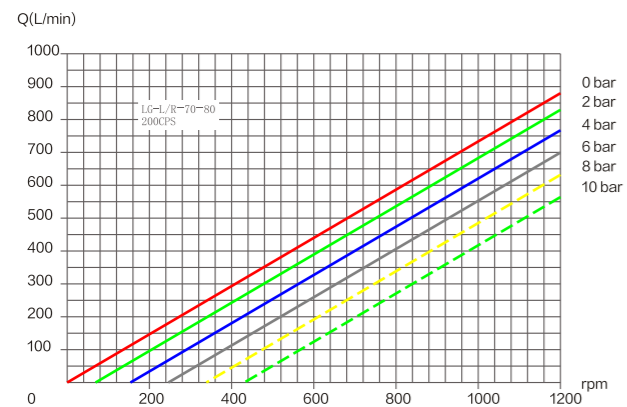
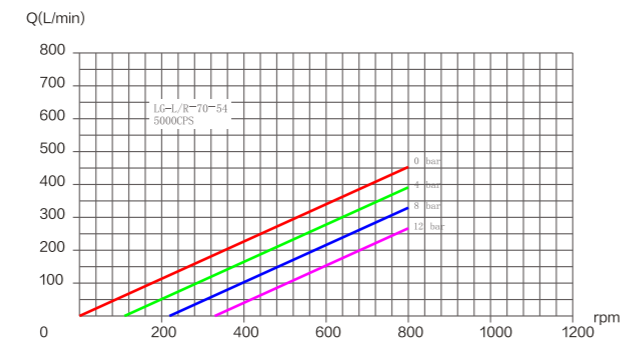
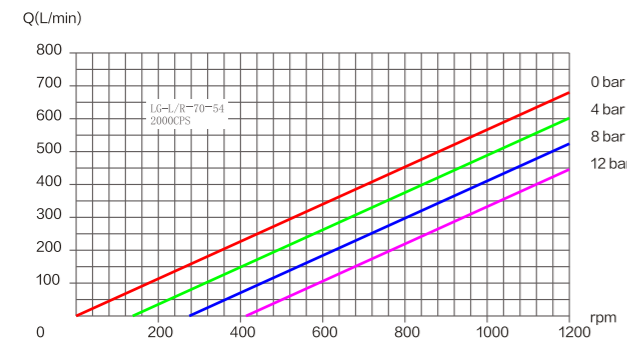
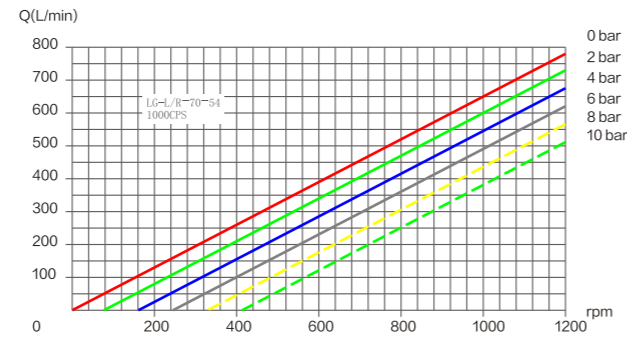
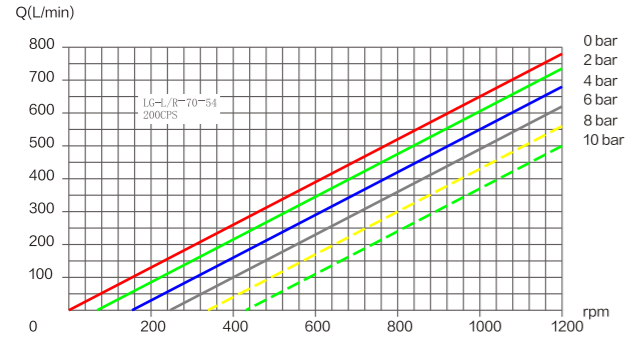


# SCREW PUMP CURVE

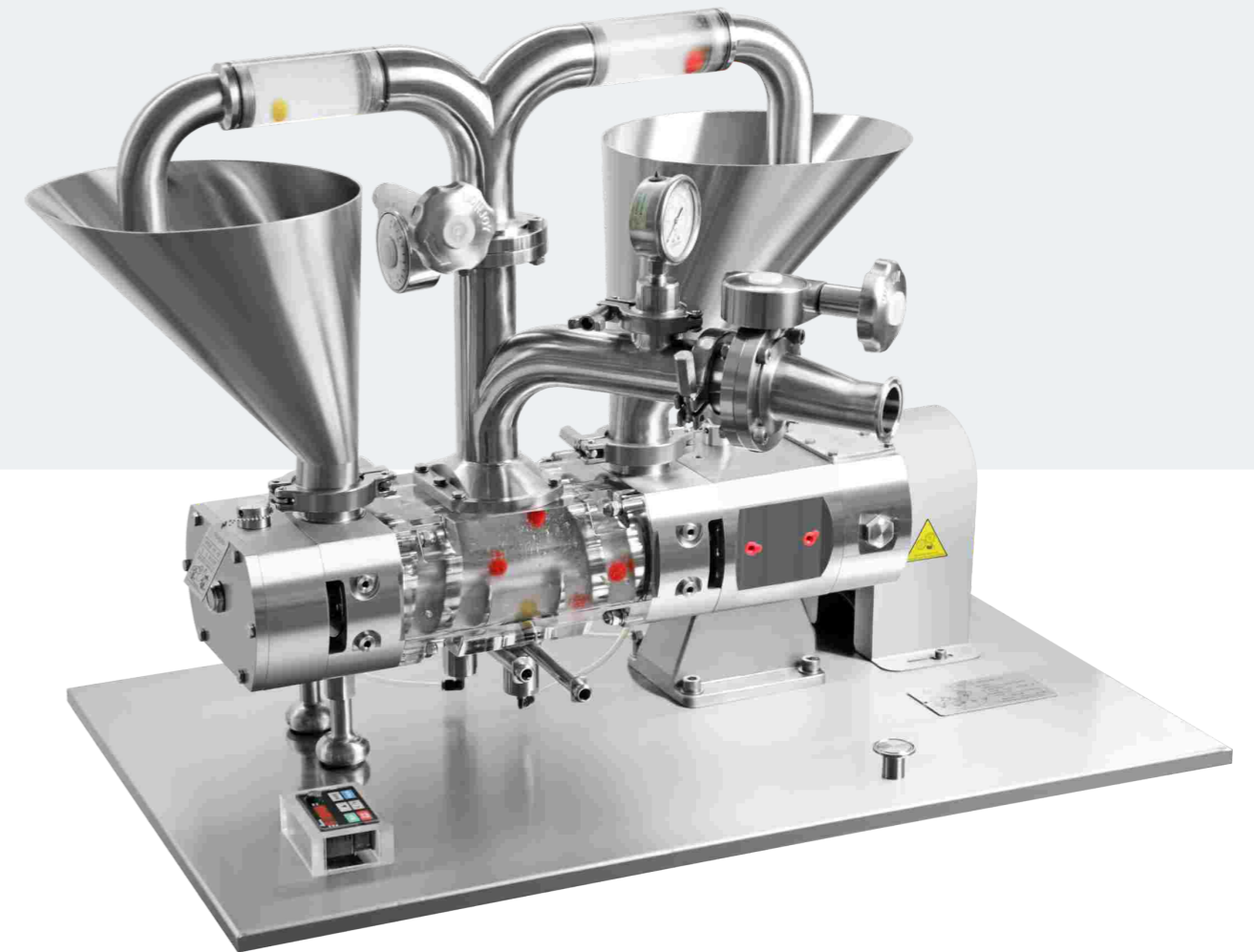
## 螺杆泵曲线图

# DOUBLE HEAD TWIN SCREW PUMP

## 双头双螺杆泵

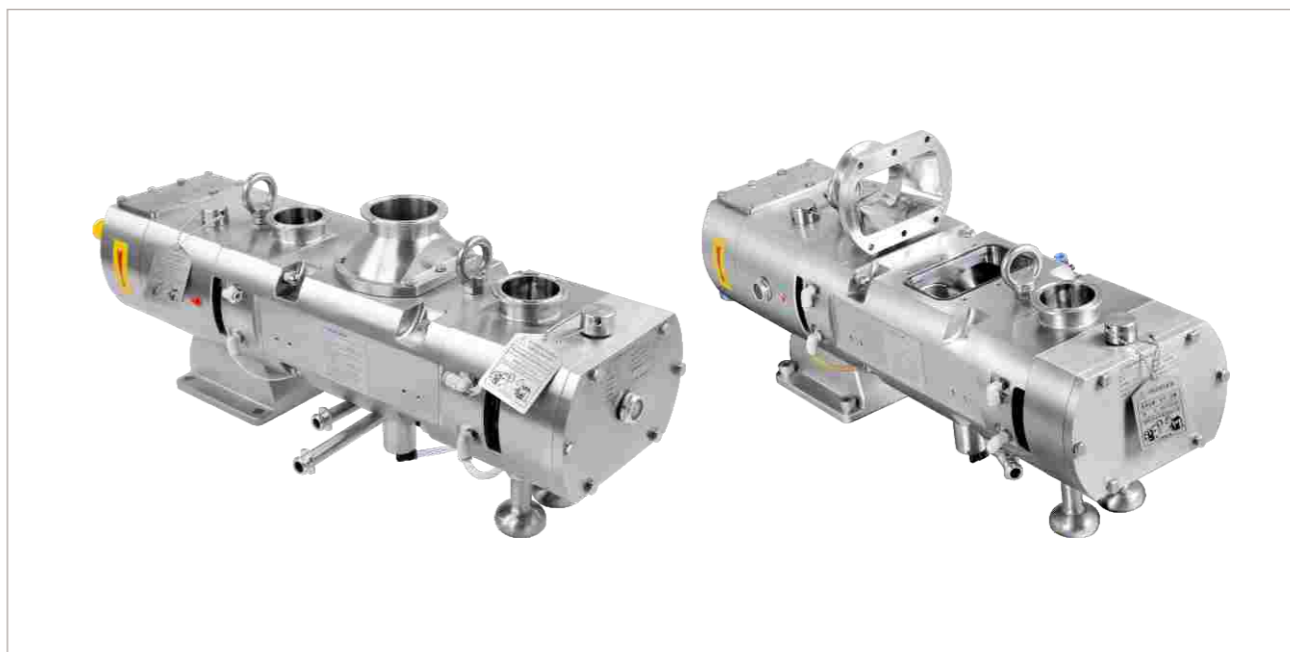
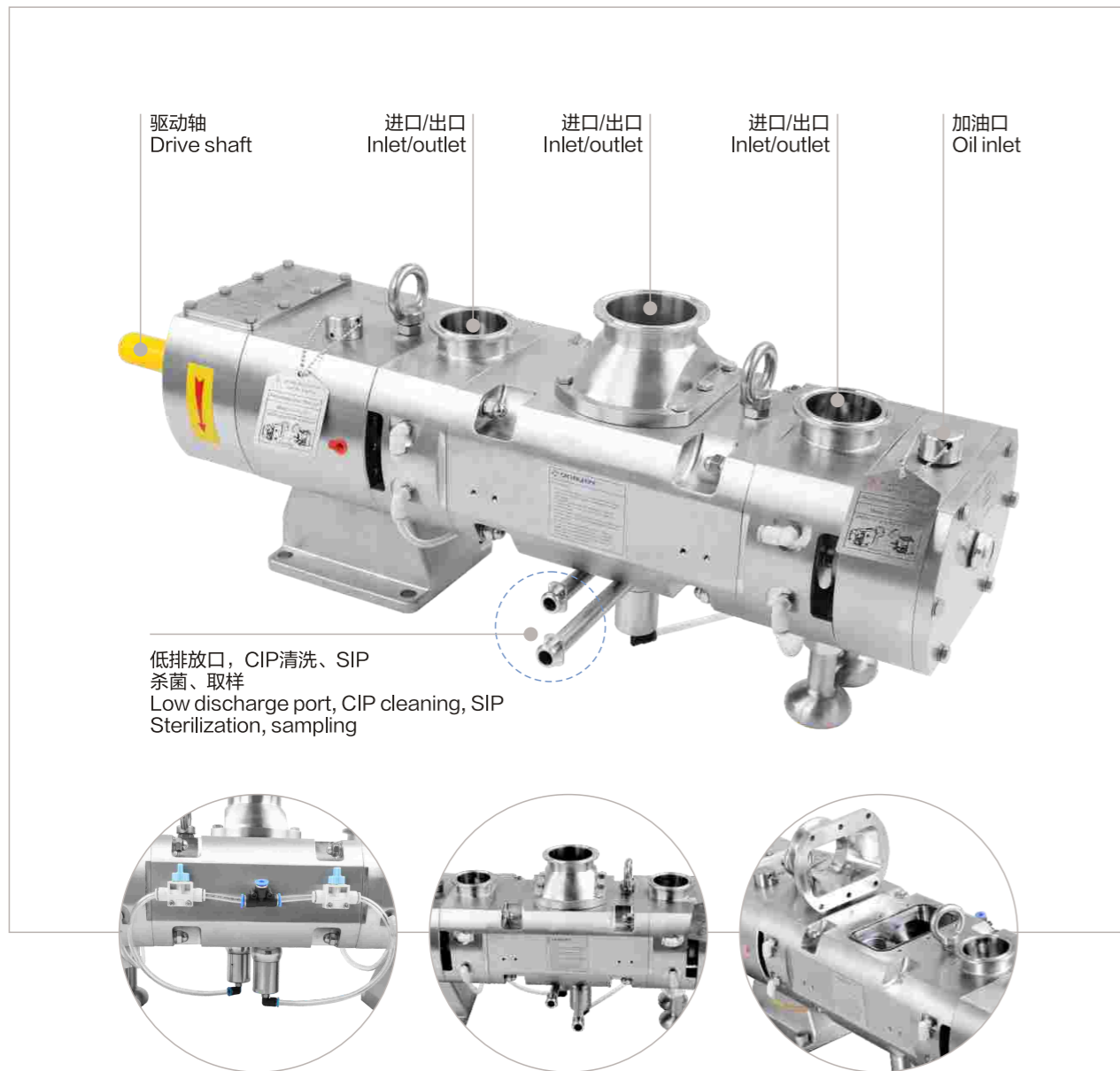


S-LG系列螺杆泵  
 更高流量、更高压力、双吸入口、多任务处理、多功能  
 双向可逆运行、高低粘度、无脉冲、含颗粒等各种物料无破损柔性输送的解决方案  
 S-LG series screw pump  
 Higher flow, higher pressure, double suction inlet, multi-task processing,  
 multi-function bidirectional reversible operation, high and low viscosity, no pulse, containing  
 granule and other materials without damage and flexible transportation solutions



# DOUBLE HEAD TWIN SCREW PUMP

## 双头双螺杆泵



SLGR螺杆泵技术参数表 Technical Parameter Table of Screw Pump

型号 Model	螺杆间距 Screw pitch (mm)	每转排量 Discharge per revolution (L/Rev)	最大流量 Max flow (L/m)	最大流量 Max flow (m³/h)	最高转速 (rpm) Max speed (minutes)	可通过粒径 Max diameter of passed granule (mm)	最大压力 Max pressure (bar)	泵头进口 Head port (inlet)	泵体出口 Body port (outlet)	重量 Net weight (kg)
SLGR-20-18	18	0.14	280	17	2000	8.5	20			
SLGR-20-26	26	0.20	400	24	2000	12.5	20	2.5"-DN65	2"-DN50	55
SLGR-20-39	39	0.30	600	36	2000	19.0	20			