



I-line 管件
I-line fittings

国家高新技术企业 浙江省著名商标
www.cndonjoy.com



东正一直致力于技术进步，是您值得信赖的事业伙伴！
Donjoy committing to major technological advances, is your reliable business partner!

0.1	自控调节阀+控制器 Automatic control regulating valve +Control head
0.2	生物制药隔膜阀 Biopharmaceutical diaphragm valve
0.3	高洁净泵 High purity pumps
0.4	防混蝶阀+蝶阀 Mixing proof butterfly valve +Butterfly valve
0.5	球阀 Ball valve
0.6	截止换向阀+防混阀+罐底阀 Divert seat valve+Mixing proof valve +Tank bottom valve
0.7	角座阀+截止阀 Angle seat valve+Globe valve
0.8	止回阀+恒压阀+安全阀+减压阀 Check valve+constant pressure valve+safety valve +air release valve
0.9	清洁技术+取样阀+视镜+照明技术 Clean technology+sample valve+sight glass +lighting technology
0.10	过滤器+人孔 Filter+man hole cover(manway)
0.11	卫生管件 Sanitary fittings ASME BPE DIN11852 Bs4825 SMS ISO IDF 3A



注意：
目录技术资料仅供设计参考，
设计更新和技术升级恕不另行通知！

东正始终坚持以不断革新的技术、日新月异的市场发展和客户需求是当今我们面临的最大挑战。面对这些挑战我们信心十足，因为东正高度专业化的产品和技术创新，是我们未来将以更高、更优的产品来满足不断增长的市场需求。

Technological innovation, rapid development of the market and customer needs are the greatest challenges facing us today. Facing with these challenges we are confident, because of highly professional products and technological innovation, we will meet the growing demand of market and customer with our better and better products.

法律声明：
目录样册版本属东正所有，如有抄袭东正将追究其法律责任和经济赔偿。东正已获得国家版权局书刊号。
东正众多技术设计，都具有专利保护，如有抄袭，东正必将追究法律责任和经济赔偿。

领先源于创新 创新源于专业
东正的专业与品质的邂逅源于创新的精神



现代化工厂已经投产，期待您的光临！
温州空港经济园区生产基地
Wenzhou airport economic zone production base

占地面积29000m²，总投资1.2亿元，新引进工业机器人、5轴加工中心、机器人抛光设备。

Covering an area of 29000 m², with total investment after construction is expected to 120 million yuan, introduces new industrial robot, five axis machining center, machine Polishing equipment.

东正创立于1993年，注册资金5508万，是一家专注于研发高品质PID过程控制器、阀门定位器、流量控制器，阀门控制单元，高洁净过程控制阀、智能自控阀，高洁净泵、高洁净管材和管道配件。公司高度专业化的产品和技术专注于生物制药、食品饮料、酿酒、精细化工等工业领域。东正众多的创新解决方案，对满足全球，尤其是新兴市场不断增长生物制药和食品饮料行业的需求起到了积极作用。

东正制造的产品母材料、加工技术、焊接技术、表面处理等技术指标均已达到国内外先进水平。且符合ASME BPE、EHEDG、FDA、3A等一系列国际标准和规范要求，先后通过了由德国 TÜV机构实施的欧盟承压设备指令(PED-97/23/EC)和(MD-06/42/EC)认证、美国 3A机构实施的3-A卫生标准认证、中国安全阀特种制造设备(TS)许可证和中国质量认证中心CQC ISO9001:2008 质量管理体系认证等多项国际权威认证。

东正凭借先进的技术、优异的品质和完善的售后服务体系，先后被评定为国家高新技术企业，省著名商标、省科技型企业、创新型企业、专利示范企业、研发中心企业，守合同重信用AAA企业等众多荣誉。



关于东正 About DONJOY

Donjoy was built up in 1993, with registered capital RMB 55.08 millions. We focus on developing high quality PID process controller, the valve positioner, the flow controller, the valve control unit, high purity process control valve, intelligent self-control valve, high purity pump, high purity tubing fitting and pipeline accessories. Donjoy's products and technologies are widely used in biopharmaceutical, food, drink, wine fine chemicals and other industrial fields. Donjoy's innovation solutions meet the growing demand of the industry of biopharmaceutical, food and beverage from the whole world, especially the emerging market.

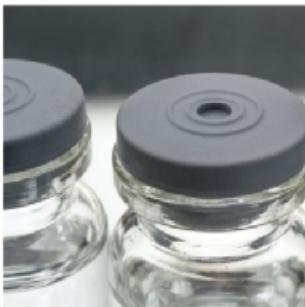
Raw material, processing technology, welding technology, surface treatment from Donjoy have achieved advanced levels of domestic and foreign market. Donjoy productions according to ASME BPE, EHEDG, FDA and 3A standard, get certificate of PED-97/23/EC and MD-06/42/EC issued by TUV, 3A issued by 3A organization, TS licence and ISO9001:2008.

Donjoy with advanced technology, excellent quality and perfect after-sales service system, has been assessed as the national high-tech enterprises, the Provincial Famous Trademark, the Provincial Science and Technology Enterprises, Innovative Enterprises, Patent Model Enterprises, R & D Center, AAA Credit Enterprises.



创立于2005年现代化工厂
温州滨海经济开发区生产基地
Wenzhou binhai economic development zone production base

DONJOY high-purity valve, pump, control system, pipe and accessories, provide the most excellent solution for various business scopes.



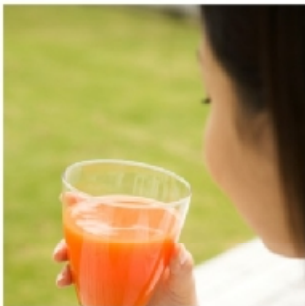
Biopharmaceutical



Dairy



Food



Beverage



Water Processing



Brewing



Fine Chemical

制造与检验 Manufacturing and testing



机器人生产线 Robot production line

全自动弯管设备 Automatic pipe bending equipment

DONJOY以科学技术是第一生产力，也是企业核心竞争力，只有不断投入核心技术研发和创新，不断追求卓越，精益求精、以先进生产设备，严格的质量管理体系，精密的生产检测流程，保证每一款产品优良的性能。

Science and technology constitute a primary productive force, also the core competitive strength of the enterprise. Continuously intensifying the research, development and innovation of core technology, pursuing prominence and keeping improving, ensuring the excellent quality and performance of every single product by advanced production equipment, strict quality control and precise production and inspection procedures.



至精 至洁 历久弥新

20多年的经验是您值得信赖的品牌-DONJOY

东正管件系列产品已全部通过美国-3A-63-03认证；橡胶垫圈FDA 177.2600，PTFE垫圈FDA177.1550。

材质：304、316L、1.4301、1.4404、1.4435 NB2 Fe<0.5%

表面处理：机抛光 DIN 11866 HE3c HE4c HE5c, ASME BPE SFF1 SFF2 SFF3

电抛光 DIN 11866 HE3c HE4c HE5c, ASME BPE SFF4 SFF5 SFF6



异形管件系列
(定制品)



卡箍式管件
Clamp pipe fittings



管件系列
DIN SMS ISO
BS4825 3A



无菌系列-
由任-法兰-卡箍由任
Aseptic series-Union-
Flange-Clamp union

BPE管件
BPE pipe fitting



由任
Union



管支架
Pipe holder



I-Line管件系列
I-line fittings



斜座式密封3A由任
Bevel seal ferrules



卫生钢管
Tube



材质和连接标准

Material and connectivity standards

材质有多种选项

- ◆ 1.4435-BN2 (316L) Fe < 0.5% Forged
- ◆ ASME BPE 316L
- ◆ ASTM 304, 1.4301
- ◆ ASTM 316L 1.4404

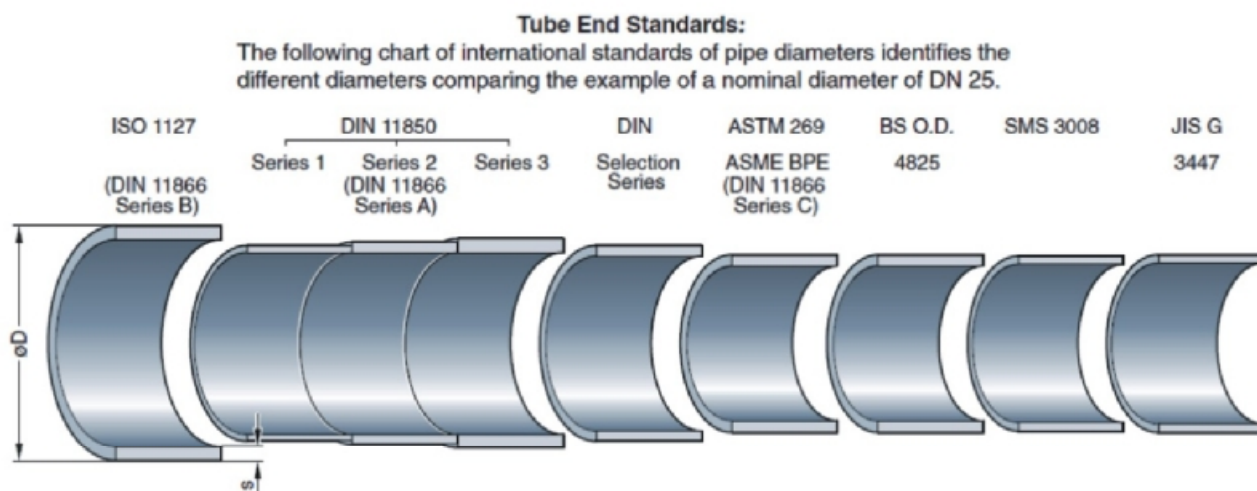
不锈钢化学成分规范
Chemical composition for automatic weld ends, %

根据ASDME BPE Table DT-3		EN 10088-3 1.4435 NB2 Fe≤0.5%	
Carbon, max	0.035	Carbon, max	< 0.03
chromium	16.00-18.00	chromium	16.00-18.00
manganese, max	2.00	manganese, max	2.00
molybdenum	2.00-3.00	molybdenum	2.5-3.0
nickel	10.00-15.00	nickel	12.5-14.0
phosphorus, max	0.045	phosphorus, max	0.045
silicon, max	1.00	silicon, max	1.00
sulfur	0.005-0.017	sulfur	≤ 0.030
		nitrogen	< 0.11

管道接口标准 Pipeline end standard

下表格：以DN25为列的不同国际标准卫生级不锈钢管道直径的区别

Next form: Take DN25 for example to illustrate the stainless steel pipe OD difference in different International standard health grade



表面处理

Surface treatment

表面处理

Surface treatment

对高洁净的工艺管路系统来说，表面的粗糙度是极其重要的技术指标
 For high clean process piping system, the roughness of the surface is an extremely important technique index



Surface finish: machined,
Ra 1.2 μ m



Surface finish: machined,
Ra 0.8 μ m



Surface finish: fine-machined,
and grinded, Ra 0.4 μ m



Surface finish: fine-machined,
and grinded, Ra 0.2 μ m



表面抛光 Surface polishing

Ra=粗糙度
 平均粗糙度Ra值被作为衡量一个内表面光洁度的一个参数。
 LT5.6mm 长度/测量Lc0.8mm进行5次测量粗糙度得出的平均值粗糙度Ra值。
 根据ASME BPE和DIN 11866。

Ra = roughness
 Average roughness Ra data is used as a measure of valve body surface finish of a parameter.
 LT5.6 mm length/measurement Lc0.8 mm for five measuring roughness obtained average roughness Ra data.
 According ASME BPE table to classified

Definition of the codes for Ra-Values

Allocation to the standard DIN 11866

Ra μ m	DIN 11866	α
	Hygiene class	E-polished
0.8		
0.8	HE3c	●
0.6		
0.6		●
0.4		
0.4	HE4c	●
0.25		
0.25	HE5c	●

Table SF-2.4-1 R_a Readings for Metallic Product Contact Surfaces

Surface Designation	Mechanically Polished [Note (1)]	
	R _a Max.	
	μ in.	μ m
SF0	No finish requirement	No finish requirement
SF1	20	0.51
SF2	25	0.64
SF3	30	0.76
	Mechanically Polished [Note (1)] and electropolished	
	R _a Max.	
	μ in.	μ m
SF4	15	0.38
SF5	20	0.51
SF6	25	0.64

I-LINE 卡箍接头

I-LINE Ferrule



I-line 系列卡箍管件是食品、酿酒、油品、水处理等工程较为理想的选择，该系列卡箍管件优势在于压力高，抗震动强，能承受较高温度，拆装简单方便，并且达到卫生要求。

规格：1"-8"

材质：ASTM T304/316L

表面处理：180Grit/300Grit

垫圈可选择：EPDM FPM NBR 常用垫圈Silicon

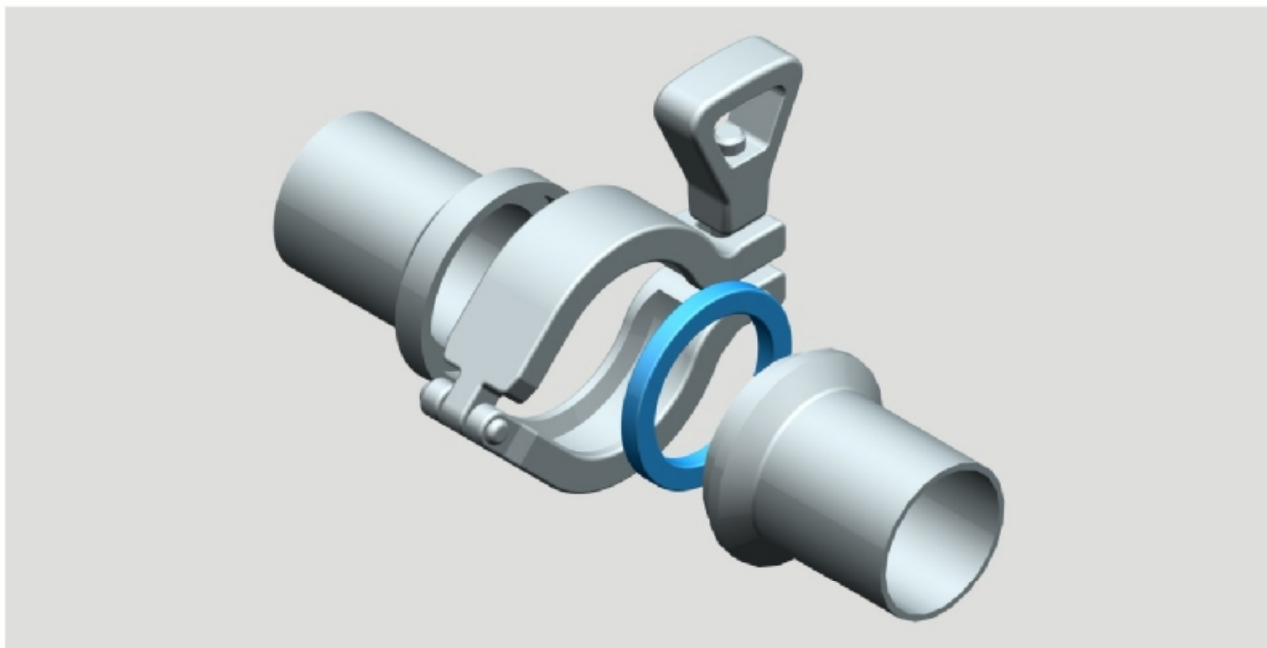
I-Line Fitting series is a relative ideal option for projects of food, brewing, oils and water-treatment. The advantage is strong resistant vibration and is capable of bearing high pressure and temperature. It is not only easy to both installed and disassembled but also meets hygienic requirements.

Specification: 1"-8"

Material: ASTM T304/316L

Finish: 80Grit/300Grit

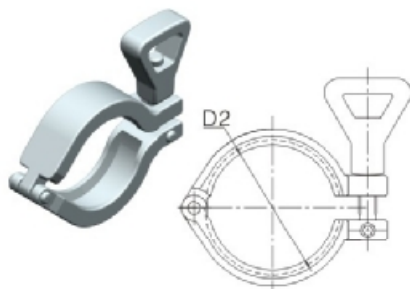
Options for Gasket: EPDM FPM NBR Silicon (standard)



卡箍 Clamp

适用于 Suitable for: I-LINE

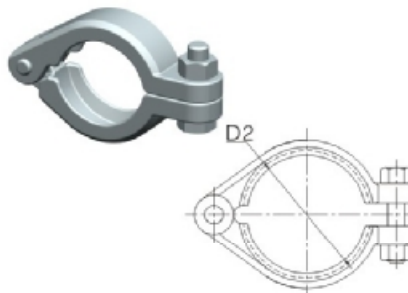
货号代码 Cargo code : F100241



卡箍 13IS

SIZE	尺寸
	D2
1"-1.5"	50.7
2"	67.1
2.5"	84.0
3"	98.3
4"	123.7
6"	190.5

货号代码 Cargo code : F100242



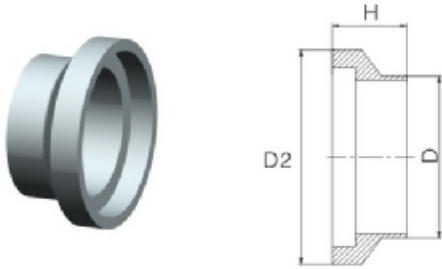
卡箍 13I

SIZE	尺寸
	D2
1"-1.5"	50.7
2"	67.1
2.5"	84.0
3"	98.3
4"	123.7
6"	190.5

卡箍接头(15WI) Ferrule

适用于Suitable for: I-LINE

货号代码 Cargo code : F100201

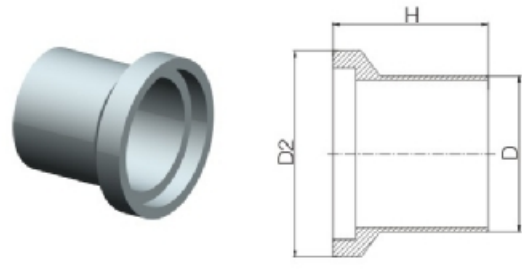


SIZE	尺寸		
	D	D2	H
1"	25.4	50.7	19.8
1.5"	38.1	50.7	23.8
2"	50.8	67.1	26.2
2.5"	63.5	84.0	29.4
3"	76.2	98.3	30.9
4"	101.6	123.7	34.1
6"	152.4	190.5	28.6

卡箍接头(15WLI) Ferrule

适用于Suitable for: I-LINE

货号代码 Cargo code : F100202

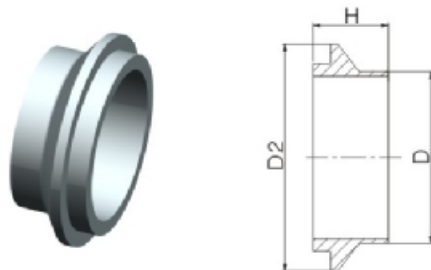


SIZE	尺寸		
	D	D2	H
1"	25.4	50.7	44.4
1.5"	38.1	50.7	51.6
2"	50.8	67.1	58.7
2.5"	63.5	84.0	63.5
3"	76.2	98.3	68.3
4"	101.6	123.7	76.2

卡箍接头(14WI) Ferrule

适用于Suitable for: I-LINE

货号代码 Cargo code : F100211

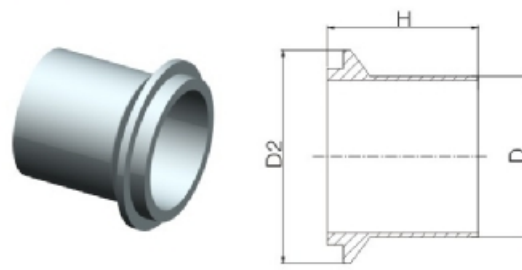


SIZE	尺寸		
	D	D2	H
1"	25.4	50.7	19.8
1.5"	38.1	50.7	23.8
2"	50.8	67.1	26.2
2.5"	63.5	84.0	29.4
3"	76.2	98.3	30.9
4"	101.6	123.7	34.1
6"	152.4	190.5	28.6

卡箍接头(14WLI) Ferrule

适用于Suitable for: I-LINE

货号代码 Cargo code : F100212



SIZE	尺寸		
	D	D2	H
1"	25.4	50.7	44.4
1.5"	38.1	50.7	51.6
2"	50.8	67.1	58.7
2.5"	63.5	84.0	63.5
3"	76.2	98.3	68.3
4"	101.6	123.7	76.2

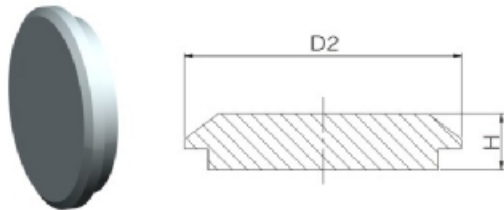
I-LINE 卡箍接头

I-LINE Clamp connector

卡箍接头(14WI-CAP) Ferrule

适用于Suitable for: I-LINE

货号代码 Cargo code : F100231

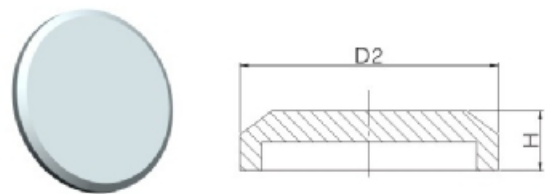


SIZE	尺寸	
	D2	H
1"	50.7	9.7
1.5"	50.7	9.7
2"	67.1	11.8
2.5"	84.0	15.5
3"	98.3	16.1
4"	123.7	16.1

卡箍堵头 (15WI-CAP) Clamp Cap

适用于Suitable for: I-LINE

货号代码 Cargo code : F100232

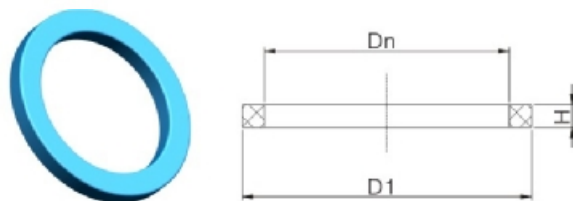


SIZE	尺寸	
	D2	H
1"	50.7	12.8
1.5"	50.7	12.8
2"	67.1	17.7
2.5"	84.0	18.8
3"	98.3	19.4
4"	123.7	19.4

I-LINE垫圈 I-LINE Gasket

适用于Suitable for: I-LINE

货号代码 Cargo code : F100221



SIZE	尺寸		
	D1	Dn	H
1"	31.8	22.4	2.5
1.5"	44.5	35.1	2.5
2"	57.2	47.8	2.5
2.5"	69.9	60.5	2.5
3"	84.1	73.4	2.5
4"	109.5	97.9	2.5
6"	158.9	147.4	2.5





CHINA DONJOY TECHNOLOGY CO.,LTD.

DONJOY looking forward to your visit! Your telecommunications!



中国·东正 科技有限公司

温州空港新区:
温州通海大道港富路25号
总机: 0577-86990888
传真: 0577-86998000

Wenzhou airport Area:
No.25 Gangfu Road,Tonghai Avenue,
wenzhou
Tel: +86-577-86990888
Fax: +86-577-86998000
E-mail: donjoy@cndonjoy.com

www.cndonjoy.com

法律声明:

目录样册版本属东正所有, 如有抄袭东正将追究其法律责任和经济赔偿。东正已获得国家版权局书刊号。
东正众多技术设计, 都具有专利保护, 如有抄袭, 东正必将追究法律责任和经济赔偿。